



Serving Northern Berks County
Northern Reading &
Southern Schuylkill County
Weekly Circulation Over 31,056

NORTHERN
BERKS

Merchandiser

PUBLISHED BY... THE WINDSOR PRESS, INC. (Family Owned & Independent Since 1958)
6 NORTH THIRD STREET, P.O. BOX 465, HAMBURG, PA 19526-0465 • FAX: 610.562.2770
610.562.2267 OR 1.800.562.5521 • Open Monday Through Friday 8 AM - 5 PM
ON THE WEB: www.windsorpress.com or www.nbmerchandiser.com

PRST STD
U.S. POSTAGE
PAID
READING, PA - PERMIT 524

You can directly link to any
display advertiser's website
through our online edition.
HIGHLIGHT & CLICK



WE ACCEPT

SHOEY DINER

FAMILY RESTAURANT

Free WiFi

Rt. 61 Shoemakersville (next to Sheetz)
610-562-0700

We Accept American Express, Discover,
And All Other Credit Cards

www.shoeydinerpa.com

HOURS: Monday thru Thursday 6 am to 9 pm;
Open 6 am Friday thru 9 pm Sun. with Special Menu & Special Prices

OPEN ALL HOLIDAYS!!!



VETERAN'S DAY
November 11, 2015
ALL VETERANS EAT
FREE
ALL DAY

- BREAKFAST SPECIALS-

2 Eggs, Home Fries, **\$1.39**
Toast

With Purchase Of Coffee

With Bacon **\$2.99**

With Scrapple,
Ham or Sausage **\$3.99**



New York Strip Steak,
2 Eggs, Home Fries & Toast

\$6.99

6-8 oz. Steak



FREE THANKSGIVING DINNER

Monday, November 23, 2015

3 pm to 8 pm

Come Enjoy Our Shoey Diner "Family"!

FREE DINNER INCLUDES:

Drink, Entree & 2 Vegetables



- LUNCH SPECIALS-

BLT, Tuna, Chicken
or Egg Salad &
Cup of Soup

\$3.99



**Come
and Try
Our New**

Lunch Specials:

**Black n' Blue
Rodeo Burger,
Big Chili
Baked Potato
And More**



- EARLY BIRD DINNER SPECIAL-

7 days a week - 11 am to 6 pm

Entree,
1 Trip To Salad Bar,
Pudding or Ice Cream

\$7.95

Over 20 Entrees To Choose From



- WEEKEND BREAKFAST SPECIAL-

SAT. & SUN. ONLY - 5 am to 8 am

Any Omelet On Menu,
Home Fries, Toast

\$3.99

FREE COFFEE With Meal



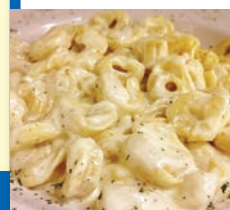
Fri., Sat., & Sun.

11 am to 9 pm

Come Try Our
**Chicken Marsala
Shrimp Scampi
Shrimp &
Scallop Palerno**

* * * * *

Try Our Pasta
**Tortellini Alfredo
Linguini
Carbonara**



~7 Days A Week~
Hearty Homemade
Dutch Meals



**October
31
Only
3-9 pm**

**Come In a Halloween Costume
Get 10% Off Your Meal!**

**Shoey Diner Family Wishes All Of Berks Co.
HAPPY HOLIDAYS!**

HALDEMAN
610-683-3553  **KUTZTOWN**
www.HaldemanFordKutztown.com
RT. 222, Next to Sittler Golf, Kutztown • Service: 610-683-3673
Service Hours: Mon. 7:30 a.m. to 8:00 p.m.,
Tues. - Fri. 7:30 a.m. to 5:00 p.m., Sat. 8 a.m. to 4 p.m.

 **FORD CERTIFIED
PRE-OWNED**

*Not all buyers qualify for Ford Credit financing. 1.9% APR for 66 months at \$15.97 per month per \$1,000 financed on select vehicles, regardless of down payment. Take delivery from dealer stock by 9/30/15. Residency restrictions may apply. See dealer for qualifications and details.

\$17,995

\$3,900

\$12.295

\$6.795

\$20.495

2009 Ford E-250	\$11,995	2013 Ford Fiesta	\$10,295
2010 Ford Escape	\$14,295	2013 Ford Focus	\$13,795
2014 Ford Escape	\$25,995	2014 Ford Focus	\$11,995
2014 Ford Escape	\$21,995	2011 Ford Focus	\$8,495
2003 Ford Expedition	\$9,495	2008 Ford Focus	\$7,295
2004 Ford Expedition	\$10,995	2013 Ford Focus	\$14,495
2013 Ford Explorer	\$30,000	2008 Ford Focus	\$7,995
2012 Ford Explorer	\$21,995	2014 Ford Focus	\$14,495
2013 Ford Explorer	\$28,495	2008 Ford Focus	\$9,495
2014 Ford F-150	\$28,995	2012 Ford Fusion	\$14,295
2010 Ford F-150	\$22,495	2011 Ford Fusion	\$15,495
2013 Ford F-150	\$38,995	2013 Ford Fusion	\$23,995
2015 Ford F-150	\$32,995	2013 Ford Fusion	\$16,495
2015 Ford F-150	\$36,495	2013 Ford Fusion	\$15,995
2014 Ford Fiesta	\$10,995	2014 Ford Fusion	\$18,995

*Taxes, tags, title, license and all legal PA State dealer documentation fees are extra.
Offers expire 9/30/2015 or while supplies last. See dealer for complete details.

~ COUPON ~

**PA State Inspection
and Emission**

Includes Sticker
& MCI Fee **\$29⁹⁵**

*Pass or fail. Does not include parts. Parts & Labor Additional.
Good only at Halldeman Ford. Offer good through Nov. 7, 2015

~ COUPON ~

YOU SPEND... YOU GET...

\$100 - \$249	7% OFF
\$250 - \$499	10% OFF
\$500 - \$1000	12% OFF

Must present coupon to Service Advisor immediately at the time of arrival/write-up.
Not valid at Cashier window or at time of checkout. Must present coupon when order is written. Cannot be combined with any other offers or previous purchase.
Excludes Tires. Valid only at Halldeman Ford of Kutztown. Ford vehicles only.
Offer good through Nov. 7, 2015

FINAL WEEK!
6th Anniversary

Sale-A-Bration
Drawing For Special Prizes Including
Coach Handbag (See store for details)

Wed., Oct. 28 thru Sat., Oct. 31
EVERYTHING ON SALE
INCLUDING NEW ARRIVALS!
Additional Savings
Up To 75% Off

Believe It!
CONSIGNMENT BOUTIQUE
Jr. & Women's New and "Like New" Brand Name Clothes & Accessories
1543 Old Rt. 22, Lenhartsville, PA 19534
610-562-5532 • 610-972-5532
Wed. & Thurs. 11 am-6 pm; Fri. 11 am-5 pm & Sat. 11 am-4 pm

Like Us On  [believeitconsignments@gmail.com](http://www.believeitconsignments@gmail.com)
www.believeitconsignments.com

Conveniently Located
64 E. Bellevue Ave.,
Shoemakersville - off Rt. 61
 behind Bell Trucking & Kuzans Hardware
610.562.3886

2003 Saturn Vue 5sp, manual trans, silver with gray interior. Very good condition. Regularly maintained, no engine light, no codes, 151,000 miles, \$3000. Call 610-683-0464.

I Pay For Cars: I'll buy your used car, truck or classic. Licensed dealer will pay cash for your vehicle. Free pick up. www.ipayforcars.com
Maxatawny Auto Sales,
15320 Kutztown Road,
Kutztown 610-683-0480.

WE BUY OLD, Classic, Vintage, and Exotic Cars. \$\$\$ We pay cash \$\$\$. Will pick up vehicle and handle title! Call Ruozzi Brothers Collection at 610-398-9700 or contact@rbcarcollection.com

WE WILL DISPOSE OF
Your Used Motor Oil and
Transmission Oil at No
Charge. Monday through
Friday, 7am to 4:30pm,
Saturday 8am to 11:30am.
STEVE MOYER SUBARU,
201 S. Centre Ave.,
Leesport, PA, 19533, 610-
916-7000.

1995 CHEVY 6.5 diesel engine. Bad block. Buy complete or parts. Starter, alternator, power steering, water and injector pump, Turbo charger and radiator, A/C compressor, flywheel and clutch assembly. 610-562-5053.

ALWAYS BUYING:
Wrecked, Running, Dis-
abled & Junk Vehicles.
Call for Prices.
NAFTZINGER USED AUTO
PARTS, Auburn, PA 570-
754-7491.

**NEW & USED PICKUP
CAPS:** Contractor Caps,
Jeraco Fiberglass, Under-
cover lids, Extang Ton-
neau Covers. BeCo Cap
Outlet, 717-336-3141.

1/4 acre, corner lot at Stonecliff Park. Trail and creek access. Water, sewer available \$9,500. Hobly@aol.com. Call 610-326-2471. Or best offer.

COOPERSTOWN LAND Liquidation! 10 acres - \$29,900 Priced 70% **BELOW MARKET!** Woods, utils, twnd rd, private setting just 7 miles from Village! Terms avail! 888-431-7214 (*188705).

Explore Owning Your Own Franchise in the Lucrative Retirement/ Estate Planning Industry. Go to: www.apgfranchise.com or call Chelsie at: 973-831-4424. (187200).

FOR SALE/ lease: Restaurant/ Sandwich Shop, 90% equipment, 1800 sq. ft. 272 S 4th St, Hamburg. Call for details 610-693-6665.

HOME FOR SALE: The Villages Florida, large retirement community. 2 Bedrooms, 2 baths. Village of Belle Aire. Fully furnished, bond paid, handicapped accessible, laminate wood floors, tile kitchen and baths, tankless water heater \$185,900. Realtor Kay Salerno, 352-205-3381

Mohawk Valley Hobby Farm - 22 acres - \$149,900 4 BR, 2 BA farmhouse, horse barn, nice views, Beautiful setting just off the NY State Thruway, 40 min West of Albany! Call 888-738-6994 for more info (*188221).

**OWN A MODULAR ON
LAND! 600 credit score
and up! DISCOVERY
HOMES at 484-641-5055.
discoverymodularhomes.com**

FOR RENT

HAMBURG 3-4 BR 1.5 bath
single family home with a
large yard and porch.
Plenty of off street park-
ing. W/D and appliances
included. \$1200/mo plus
utilities. \$1100 early pay-
ment 610-463-5011.

2000 Jeep Wrangler for sale.
6cyc, 5spd, fair condition.
125,000 miles. \$6000 OBO.
Call 570-956-1763.

1965 CHEVY C10 Longbed
Stepside. Great for Ratrod.
Straight 6, 3 on the column.
65k original miles. \$3500.
OBO. Call 610-392-4717.

1987 Ford Crown Victoria
Sedan Automatic. Excellent
condition, in family since new.
garage kept, A Classic. Must
see, 610-395-9155.

BUYING VEHICLES: 1998
through 2008, Reasonable
Pay Offs Made or Fair
trade in Price paid, Nice
condition, or not running.
Will pay accordingly. Call
for Quote before 8pm.
570-449-4094. Jay & T's,
Cressona.

FOR SALE: 2009 GMC 3500 HD 4x4 Dump Truck. Aluminum Dump, Fisher V-plow, rear mount salt spreader. Less than 10,000 miles. Sold as is. Leesport Boro will be accepting sealed bids for above listed item. Bids to be opened Nov. 18th. 2015, at council meeting. Call 610-926-2115 for further inquiries.

FOR SALE: 4 - 20" Wheels/Tires & Hub covers from a 2011 F350 King Ranch. Size: LT275/65R20 with Michelin LTX-AT rubber. Roughly 3/16" - 1/4" of tread life left. Asking \$1,000 OBO. Please call AJ @ 610-914-7425

e-Subscribe to the Northern Berks and East Penn Valley Merchandisers at: www.windsorpress.com

**50' VAN TRAILERS / 40' SS TANKER TRAILER, AUTO
40+ PASSENGER COMM. BUSES, FARM TRACTORS,
RESTORABLE / SALVAGE CARS & TRUCKS
(KAISER / WILLYS JEEPS / KARMAN GIA / RAMBLER)**

Friday, November 6, 2015 at 10:00 A.M.
Location: 889 Can Do Highway (Rt. 924S), Hazleton, PA (I-81 to Exit 143 - take 924 S to U.S. Trucks & Parts (where they are stored - watch for signs). These are non-running vehicles, most are restorable, some may be salvage for parts. **Terms:** Full payment day of auction, cash, preapproved check or bank letter of purchase approval. Full ad/pics at www.Houseauctioneers.com.

Auctioneers: DOUG/TIM HOUSER, Sale by:
AU-000446L U.S. BANKRUPTCY COURT
JASON/NATHAN HOUSER, FOR MIDDLE DISTRICT
Assoc. Aucts., 610-799-2396 OF PA
or 570-386-2191 Trustee: Michael Oleyar
Sale subject to approval of the U.S. Bankruptcy
Court for Middle District of PA



FALL SALE

ENTIRE NURSERY

20% OFF

Cash & Carry



OFFERING AN ASSORTMENT OF 3 DIFFERENT BULK MULCHES

Pick Up or Deliver.
Call For Pricing.



STATE INSPECTED

Potts Nurseries

LANDSCAPING

EVERGREENS

SHRUBBERY

TRIMMING

Phone: 610-926-2131

Fax: 610-926-7202 www.pottsnurseriespa.com

427 Ontelaunee Drive, Shoemakersville, PA 19555

Our Hours Are Mon. - Fri. 9-6 PM; Sat. 9-5 PM

Call If You Need Directions **610-926-2131**

Open House

Sunday, November 1 - 1 to 3 PM

412 Miriam Ave., Leesport



Rancher! Located in Leesport Gardens, this maintenance-free exterior home features a great covered rear deck & nice yard for your BBQs & picnics, plus new windows, 3 BRs, 2 BAs, garage & walk-out family room in lower level. **\$139,900**

Directions: Rt. 61 S., R. on Wall St. (@ Turkey Hill), continue to W. Leesport, L. on Pine, R. on Miriam.



407 South Fourth Street
HAMBURG, PA 19526
PH: 610-562-2227

Each office is independently owned and operated
www.c21epting.com

FOR RENT

1 Bedroom, 2nd Floor Apartment for Rent. No animals and non-smoker inquiries only Private Off Street Parking, Washer/ Dryer Hook up, Kitchen Appliances included, Sewer/ Water included. \$600/month plus utilities. 610-562-8662.

THREE BEDROOM HOUSE in Hamburg. No pets, no smoking. Call for details, 610-562-7598 or 610-562-0314 evenings.

FOR RENT

Hamburg Area Country Apartment, 2nd fl. 4 rooms & bath, new windows, new kitchen, stove, & refrig, new paint, carpet, vinyl, covered patio, off street parking, W&D hookup in basement, ideal for 1 or 2 mature adults. \$800/mo. Includes heat, water, sewer & trash. Must pass background and credit check. No smoking or pets, Min. 1 yr. Lease, Ph 610-562-7311.

FALL CLEARANCE SALE



SAVE NOW ON ALL IN STOCK INVENTORY !



EASTERN

building products

14588 Kutztown Rd.

Fleetwood, PA 19522

610-683-6120 * ebpsheds.com



PUBLIC AUCTION

7 GUNS, 18-GUN TREADLOCK GUN SAFE, BUTCHER EQUIPMENT, ANTIQUES, COLLECTIBLES, HOUSEHOLD GOODS & TOOLS

Monday, November 2, 2015 at 1:30 P.M.

Location: Indoors at the Leesport Farmers Market Banquet Hall, just off Rt. 61 (8 miles N. of Reading) at the north end of Leesport, Berks Co., PA.

Items: Cherry drop-leaf tbl., Empire chest, maple bed - drssr. - chest of drwr., sofa, Kenmore washer & dryer, Lane cedar chest, cherry tbl. & chrs., La-Z-Boy recliner, mod. dry sink, LR chrs., lamps, Sentry safe, 2 wheel-chairs, vacuum, kero. lights, bedding, animal & Beam decanters, oil paintings by B. Trapp, Carnival & other glass, pictures & frames, Mason jars, Sunshine Beer clock, agate, umbrella holder, sm. kit. items, Reading beer clock, milk can, brass bucket, hog scrapers, dip-pers, Cl butcher kettle, ladles, knives, forks, scrapple pans, sausage stuffer, jugs, fishing rods, Craftsman 17" flr. drill press, 6" jointer, wood rakes, table saw, old adv. boxes, hardware, sm. pwr. tools, galv. tubs, beam scale, clamps, plus many hand & grdn. tools. **Guns:** Pointer 20-ga. O&U (new in box), Ruger Red Label 12-ga. O&U, Weatherly Van Guard 30-06 - new in box, Ithaca 12-ga. pump Deerslayer w/3x9 scope, Remington 700 - 300-cal. SAUM, Chipmunk 22 rifle, Winchester 22-cal. pump, hunting clothes, ammo., etc. **Guns in nice cond. - sell approx. 5:30 PM.**

Terms: Cash or check; day of auction. Very clean auc-tion.

Auctioneers: KENNETH P. LEIBY Sale For:
PA L#AU001541-L RUSSEL & DOROTHY
BRIAN GELSINGER, PA L#AU0005528 HELMS
610-562-3929 • www.auctionzip.com - I.D. #5718

Harman Pellet, Gas & Coal Stoves

BEFORE YOU BUY ANYWHERE ELSE, CHECK OUR PRICE AND SAVE MONEY!

Harman P43 Pellet Stove



The P43 is a convenient option to reduce home heating bills. Intricate styling and uncompromising craftsmanship offer a distinctive design statement in any room — while advanced technology is at work behind the scenes. PelletPro™ and ESP technology burn any grade of pellet for up to 43,000 BTUs of even heat. Just fill the 50-lb. hopper, set the desired temperature, and relax. The P43 will automatically ignite and maintain consistent room temperatures within one degree.

\$100⁰⁰ OFF

plus 2 FREE Tons of Pellets

Hurry! Limited Supply with Purchase of Harman P43 Pellet Stove

DEWALD & LENGLE Hardware & Rental

Rt. 443 (1 mile West of 183 & 443 Intersection) Friedensburg, PA
570-739-2100 • www.dewaldandlengle.com


Store Hours: M-F 8 to 7; Sat. 8 to 4; Sun. 9 to 4



JERRY'S

NORTHEAST AUTO SALES
RT. 61 S. POTTSVILLE, PENNSYLVANIA

"Your Logical Choice"



2007 GMC New Sierra SLE 4 Dr. Xtend 4x4 One Owner, V8, Step Bars, GVWR 7000, OnStar, Fog Lights \$18,995

2008 Mercury Mountaineer AWD 3rd Row Seating, Leather, Rear Air, Running Boards, Extra Clean \$13,995

2008 Toyota Rav4 4x4 Two Owner, Roof Rack, Remote, Extra Keys \$12,995

2008 Ford Escape XLT 4x4 V6, Auto., Satellite, Pwr. Dr. Seat, Alloy Wheels \$10,495

2008 Chevy Silverado K1500 LT Ext. 4x4 Rust Free, 8 Ft. Box, V8, Tow Pkg. \$16,995

2005 Chevy Equinox LS AWD V6, Pwr. Windows & Locks, Fog Lights, Remote Entry, 80K \$9,895

Over 50 Vehicles In Stock
FREE Lifetime Inspection - Bank Financing
TRADES WELCOME
WE BUY ESTATE CARS & TRUCKS & CLASSICS & ANTIQUES
FREE APPRAISALS
CALL TODAY 570-622-9510 YOUR DEALER FOR SERVICE AFTER THE SALE!
jerrysnortheast.com
Rt. 61 South, Pottsville 570-622-9510

FOR RENT

FOR RENT: Spacious 2nd flr Hamburg Apt on State Street w/ 2-3 bedrooms L, D, K. Includes heat, trash, water, laundry W/D and off street parking. No pets please. Asking for a security deposit and references, \$850 monthly. Seriously interested call 610-914-1517.

FOR RENT: BEAUTIFUL 14X70 in small 55 & older age-restricted Retirement Community near Fleetwood. Lap/ shingle. 2 BR's. 1 Bath. Lg. L/R & eat-in kit. C/A. Shed. Ramp. Off st. mac. Park-ing. 3 min. off Rte. 222 in grove like setting. Close to everything! \$650 per month + util. Rent inc. home, lot fee, water, sewer, garbage. Sec. dep. & ref. Required. Sorry, NO pets. Keller Homes. 610-944-7696.

FOR RENT: 14x60 Mobile Home loc. 5 minutes N. of Hamburg/ Cabela's in small adult only age restricted park under State Game Lands. Must love nature. 1 BR. Den. C/A. Gas Heat. Close to every-thing! Enjoy clean basic housing for \$599 per month + util. Rent inc. home, lot fee, water, sewer, garbage. Max. 2 occu-pants & 2 vehicles. Sec. dep. & ref. Required. Sorry, NO pets. Keller Homes. 610-944-7696.

FOR RENT

FOR RENT: in Lyons sec-ond floor, 1 BR, total gas, range, refrigerator, water, sewer, trash included. \$675/mo. plus Security, and utilities, 484-256-2240.

FOR RENT: Kutztown, 1st and 2nd floor Apts. \$700 per month plus utilities, no pets and no smoking, lease plus security, call 610-683-6239.

FOR RENT

House 4 Rent Kutztown: 3 Bedroom, 1.5 Bath, LR, DR, Kitchen, Quiet Area, Nice Front/ Back Yard, Wooden Floors, No Pets/ Smoking. Serious In-quiries Only. Up to 2 unre-lated people (Grad Stu-dents Welcome) or Single Family (Month 2 Month possible) Leave detailed message 860-373-8963.

FOR RENT

HAMBURG FIRST FLOOR 1BR apartment \$650/mo. You pay all utilities, no pets, no smoking. 610-488-1795 leave message with phone number.

Shoemakersville Home: 3 BR 1½ Baths, LR, DR, Kitchen, Porch, yard, shed, \$895/mo. Plus utili-ties. 610-562-8551 or 610-562-4271.

www.edwardjones.com


Compare Our CD Rates.

Bank-issued, FDIC-insured

30 month	1.4% APY*	Minimum deposit \$5000
3 year	1.65% APY*	Minimum deposit \$5000
5 year	2.25% APY*	Minimum deposit \$5000

*Annual Percentage Yield (APY) effective 10/22/2015. CDs offered by Edward Jones are bank-issued and FDIC-insured up to \$250,000 (principal and interest accrued but not yet paid) per depositor, per insured depository institution, for each account ownership category. Please visit www.fdic.gov or contact your financial advisor for additional information. Subject to availability and price change. CD values are subject to interest rate risk such that when interest rates rise, the prices of CDs can decrease. If CDs are sold prior to maturity, the investor can lose principal value. FDIC insurance does not cover losses in market value. Early withdrawal may not be permitted. Yields quoted are net of all commissions. CDs require the distribution of interest and do not allow interest to compound. CDs offered through Edward Jones are issued by banks and thrifts nationwide. All CDs sold by Edward Jones are registered with the Depository Trust Corp. (DTC).

Call or visit your local Edward Jones financial advisor today.



David C Doll, AAMS®
Financial Advisor

39 S 4th St
Hamburg, PA 19526
610-562-9500

Edward Jones

MAKING SENSE OF INVESTING

FDI-1867D-A Member SIPC

e-Subscribe to the Northern Berks and East Penn Valley Merchandisers at: www.windsorpress.com



28th Anniversary Storewide Sale & Celebration!

Many USA and PA Made Unique & Special Gifts

Oct. 29 thru Nov. 14, 2015

At Least 10% Off

(Except Layaways, Special Orders & Coupons)

Lots of Samples & Door Prizes

Everything In The Store

PLUS MANY HIGHER DISCOUNTS

Gift Certificates

- Scarves & Purses
- Jewelry - Bracelets, Earrings, Necklaces & Rings
- Candles, Oils & Incense
- Hand Lotions, Hair Care & Body Care
- Handmade Soaps - Great Fragrances
- Caswell Massey Toiletries
- Crystals, Glass Balls & Suncatchers

- Garden Gloves & Supplies
- Dreamcatchers
- Windchimes & Bells
- Tea, Teapots & Mugs
- Vitamins, Bulk Herbs & Supplements

308 State St., Hamburg, PA 19526
610.562.4403
Hours: Mon., Tues., Thurs., Fri. 10 a.m. to 6 p.m.; Sat. 10 a.m. to 4:30 p.m.; Closed Wed. & Sun.



GET READY FOR WINTER DRIVING

Check Your Vehicle's

- Headlights
- Air Filters
- Wiper Blades
- Battery, etc.

Thren's Auto Parts Has A Complete Parts Inventory To Make Sure Your Car or Truck Is Running Right

Thren's
AUTO PARTS

515 Hawk Ridge Drive,
Hamburg, PA 19526
610-562-7838
HOURS: Mon. thru Fri. 8:00 AM to 7:00 PM;
Sat. 8:00 AM to 5:00 PM; Closed Sun.

NELSON ADAMS ESTATE TOY AUCTION #4

Wed., Nov. 4, 2015 at 1:00 PM - Doors Open @ Noon
Location: Leesport Farmers Mkt. - Diefenderfer Auction Gallery, Rt. 61, Leesport, PA 19533. (Halfway between Reading & Hamburg on Rt. 61, back side of the main market bldg.). This is the 4th auction of vintage toys from the early 1900s thru the 1960s... highlighted as follows: **40+ Cast Iron:** Cars & trucks from Hubley, Kenton & more; **50+ Tin:** Windups, friction, cars, trucks; **300+ Die-Cast:** Cars & trucks from Corgi, Dinky, Manoil & Barclay; **150+ Tootsity inc.:** Prewar, sets, cars, trucks; **50+ Pressed Steel inc.:** MetalCraft, cars & trucks; **Misc:** 50+ Slush Metal; 10+ Built-Rite sets & games; rubber; too much more to list!
See www.westwall.com for catalog & pictures.
Terms: Cash, Check, MC, Visa, AMEX, Discover, 10% Buyer's Premium cash/check, 15% credit cards.
DIEFENDERFER AUCTION CO., LLC
Laureldale, PA • 610-929-8215
Auction House: AH-2010

Seller:
NELSON ADAMS
ESTATE
Schonack Landing, NY
Diana Adams, NYC Owner

WANTED TO RENT/BUY

CASH FOR YOUR Unwanted Jewelry, All varieties, Rings, Necklaces, Bracelets etc. even broken, also Watches, Pocket Watches, Coins and Sterling, Serious Prices Paid, Call Today, Lori 610-468-7110.

WANTED TO RENT/BUY

CASH FOR YOUR CAR, Call 610-916-7000. Steve Moyer's Subaru.

BOATS/MOTORS

Keep Your Boat in Great Condition! Trailer Inspection, Engine, Gear Case Work. Repairs & Installations. Custom made boat covers and canvas repairs of sale. Maiden Creek Marine & RV, 222 south of 662 Moselem Springs. www.maidencreekrv.com. 610-944-9994.

TOWNSHIP OF TILDEN

TRICK OR TREAT NIGHTS

Wednesday Oct. 28, 2015
Thursday Oct. 29, 2015
6:00 p.m. to 8:30 p.m.



WANTED TO RENT/BUY

JEWELRY WANTED: All kinds. Old costume, new costume, used, designer. Bracelets, rings, pins, earrings, necklaces, watches. Good prices paid. Call 610-781-4951.

WANTED TO RENT/BUY

Wanted: Older Quality Stereos, Fisher, Scott Marantz, Thorens McIntosh etc. 78rpm and Album collections. Call Kurt @ 610-916-3554.

HAMBURG SCHOOLS



This beautifully renovated home is a must see. Situated in a nice country setting, yet still minutes from shopping and commuting. Located in Hamburg Schools, this home offers 3 bedrooms and 1 bath. Features a wraparound driveway with a one-car detached garage and plenty of off-street parking. Some upgrades include new flooring and fresh paint throughout, updated kitchen and bath and a remodeled master bedroom with a spacious walk-in closet. Schedule your showing today!

\$144,900

Jen Blankenbiller
REALTOR®
Cell: 484-529-9169
Office: 610-372-3200
E-mail: jblankenbiller@homesale.com

BERKSHIRE HATHAWAY HomeServices

EQUAL HOUSING OPPORTUNITY

A member of the franchise system of BHH Affiliates, LLC

AUCTION LISTINGS

10-26-15	Leesport Farmers Mkt. Ctr. Ct. Mtg. Rm.	K. Leiby, B. Gelsinger
10-27-15	59 Constitution Blvd., Kutztown	Hornung Farm Agency
10-27-15	Leesport Farmers Mkt. Banquet Hall	D. & T. Wagner
10-28-15	Leesport Auction Gallery, Leesport Farm. Mkt.	Diefenderfer Auc. Co.
10-29-15	1260 Twin Ponds Rd., Breiningsville	D. Arner
10-29-15	31 Fort Franklin Rd., Andrees	D. & T. Houser
10-29-15	108 S. Richmond St., Fleetwood	G. Miller IV
10-30-15	786 Deturksville Rd., Pine Grove	R. Derfler
10-30-15	Beltzner Hall, 144 N. Whiteoak St., Kutztown	D. Loeb
10-30-15	Saucony Hall, 85 Industrial Ave., Kutztown	C. Shirk Auc. Service
10-31-15	228 S. Washington St., Boyertown	Frey Auctioneers
10-31-15	Lower Milford Fire Co., 1601 Limeport Pike, Coopersburg	G. Somers
10-31-15	740 Noble St., Kutztown	C. Shirk & E. Zettlemoyer
10-31-15	139 Marion St., Hamburg	D. & T. Wagner
11-01-15	Andreas Station House, 42 Andreas Rd.	D. Arner
11-02-15	Leesport Farmers Mkt. Banquet Hall	K. Leiby, B. Gelsinger
11-04-15	Leesport Auction Gallery, Leesport Farm. Mkt.	Diefenderfer Auc. Co.
11-05-15	173 Hickory Rd., Pine Grove	R. Derfler
11-05-15	Oley Valley Auc. Ctr., Rts. 73, 662 & Oley Rd.	J. Haas
11-05-15	3411 Harrison Ave., Reading	Kline, Kreider & Good
11-06-15	889 Can Do Highway (Rt. 924S), Hazleton	D. & T. Houser
11-06-15	Beltzner Hall, 144 N. Whiteoak St., Kutztown	D. Loeb
11-06-15	Saucony Hall, 85 Industrial Ave., Kutztown	C. Shirk Auc. Service
11-07-15	Kutztown Produce Auc., 209 Oakhaven Rd., Fleetwood	---
11-07-15	1500 Seneca St., Pottsville	R. Derfler
11-07-15	841 Weiser St., Reading	K. Leiby, B. Gelsinger
11-09-15	Leesport Mkt. Banquet Hall	K. Leiby, B. Gelsinger
11-11-15	Leesport Auction Gallery, Leesport Farm. Mkt.	Diefenderfer Auc. Co.
11-11-15	7481 Behler Rd., New Tripoli	Zettlemoyer Auction Co.
11-13-15	Beltzner Hall, 144 N. Whiteoak St., Kutztown	D. Loeb
11-14-15	675 Old State Rd., Oley	K. Leiby, B. Gelsinger
11-14-15	9821 Mertztown Rd., Mertztown	D. Loeb
11-14-15	791 College Blvd., Mertztown	C. Shirk Auc. Service
11-14-15	34 Bond Rd., Lenhartsville	D. & T. Wagner
11-18-15	Leesport Auction Gallery, Leesport Farm. Mkt.	Diefenderfer Auc. Co.
11-19-15	Oley Valley Auc. Ctr., Rts. 73, 662 & Oley Rd.	J. Haas
11-20-15	Saucony Hall, 85 Industrial Ave., Kutztown	C. Shirk Auc. Service
11-21-15	453 Ledge Rock Rd., Cumru Twp., Mohnton	G. Miller IV
11-21-15	333 Kennedy Ave., Mertztown	C. Shirk Auc. Service
11-24-15	8245 Holbens Valley Rd., Stouchsburg	Zettlemoyer Auc. Co.
11-25-15	Leesport Auction Gallery, Leesport Farm. Mkt.	Diefenderfer Auc. Co.
11-26-15	Leesport Farmers Mkt. Banquet Hall	D. & T. Wagner
11-27-15	Beltzner Hall, 144 N. Whiteoak St., Kutztown	D. Loeb
11-27-15	121 Main St., Stouchsburg	D. & T. Wagner
11-28-15	349 Kindt Corner Rd., Leesport	B. Folk
11-28-15	561 Huff's Church Rd., Alburtis	C. Shirk Auc. Service
11-28-15	1310 Hex Highway, Hamburg	D. & T. Wagner
12-02-15	Leesport Auction Gallery, Leesport Farm. Mkt.	Diefenderfer Auc. Co.
12-05-15	7 Church Street (Richland), Lebanon	K. Leiby, B. Gelsinger
12-09-15	Leesport Auction Gallery, Leesport Farm. Mkt.	Diefenderfer Auc. Co.
12-13-15	Leesport Farmers Mkt.	D. & T. Wagner

THE ABOVE AUCTIONS ARE CURRENTLY SCHEDULED TO APPEAR IN THE EAST PENN VALLEY AND/OR NORTHERN BERKS MERCHANDISER. This listing published courtesy of The Windsor Press, Inc., Hamburg, PA

STEP #2 CHOOSE A CATEGORY YOU WANT YOUR AD PLACED UNDER - (PLEASE CHECK ONE BOX.)**

<input type="checkbox"/> ANNOUNCEMENTS	<input type="checkbox"/> FARM EQUIPMENT/LIVESTOCK	<input type="checkbox"/> LOST & FOUND
<input type="checkbox"/> ANTIQUES	<input type="checkbox"/> GARAGE/YARD SALES	<input type="checkbox"/> MISCELLANEOUS
<input type="checkbox"/> AUTOMOBILES/TRUCKS	<input type="checkbox"/> HELP WANTED	<input type="checkbox"/> MOBILE HOMES
<input type="checkbox"/> AUTO PARTS & SVCS.	<input type="checkbox"/> HOME IMPROVEMENTS	<input type="checkbox"/> MOTORCYCLE/ATVs
<input type="checkbox"/> BOATS/MOTORS	<input type="checkbox"/> HOUSEHOLD ITEMS/FURNITURE	<input type="checkbox"/> PETS & ANIMALS
<input type="checkbox"/> CHILDCARE		<input type="checkbox"/> FOR RENT
<input type="checkbox"/> COMPUTERS/OFFICE		<input type="checkbox"/> REAL ESTATE

☐ **SUPER AD (Bold Type)** (\$2.00 additional per ad, per week, per publication)
FREE to Commercial ads

STEP #3 ENTER YOUR AD EXACTLY AS YOU WANT IT TO APPEAR

(Please print legibly...Please use punctuation...One word per box, please)

1.	2.	3.	4.	5.
6.	7.	8.	9.	10.
11.	12.	13.	14.	15.
16.	17.	18.	19.	20.
21.	22.	23.	24.	25.
26.	27.	28.	29.	30.
31.	32.	33.	34.	35.
36.	37.	38.	39.	40.

STEP #4 CHOOSE A PUBLICATION

DEADLINES FOR ALL CLASSIFIEDS IS THURSDAY, 5:00 PM)

☐ **East Penn Valley Merchandiser** (Reaches over 40,481 Homes)

☐ **Northern Berks Merchandiser** (Reaches over 31,056 Homes)

☐ **Both** (Cost Would Be Double) (Reaches over 71,537 Homes)

STEP #5 ENTER NUMBER OF WEEKS YOUR AD IS TO RUN:

(PLEASE CHECK ONE BOX.)

Run: ☐ 1 Week ☐ 2 Weeks ☐ 3 Weeks ☐ 4 Weeks ☐ _____

Enter Starting Date Of Ad _____

Total Amount Paid \$ _____ Check # _____

STEP #6 CHOOSE METHOD OF PAYMENT

(PAYMENT MUST ACCOMPANY AD)

We Accept Cash, Check, Money Order,   

☐ Credit Card Information: NAME ON CARD _____

ACCOUNT # _____ EXP. DATE _____

TYPE OF CARD: VISA _____ MasterCard _____ Discover _____ CVC Code: _____

SIGNATURE: _____

☐ Mail Ad With Payment To: THE WINDSOR PRESS, INC., PO Box 465, Hamburg, PA 19526-0465

☐ Bring Ad and Payment To Our Location At: 6 North Third St., Hamburg, PA 19526

☐ Place Your Ad By Phone By Calling 610.562.2267 or 1.800.220.3053

Please have your    account number and expiration date available.

We Are Not Responsible For Incorrect or Inaccurate Information or Mistakes Either in The Classified Ads or In Any Other Advertisement In This Paper.

RATES:

REGULAR AD:
Up to 20 words \$4.80 per issue per week. Additional words after 20 - 10¢ each

COMMERCIAL AD:
Up to 20 words \$7.90 per issue per week. Additional words after 20 - 10¢ each

Commercial ads include any person or group normally engaged in offering goods or services in a business environment and include: Rentals, Items Manufactured or Bought for Sale or Resale, Babysitting Service, Help Wanted, Business Listings, etc.

UNDER RULES ESTABLISHED BY THE PENNSYLVANIA HUMAN RELATIONS ACT, ANYONE WISHING TO SELL OR LEASE RESIDENTIAL OR COMMERCIAL PROPERTY OR SEEKING TO HIRE AN EMPLOYEE CAN MAKE NO REFERENCE IN THEIR ADVERTISING TO SEX, MARITAL STATUS, AGE, RELIGION, ETHNIC BACKGROUND, RACE, COLOR, DISABILITY, CHILDREN OR SUPPORT ANIMALS. Special Instructions: We will try to print your classified ad in the next issue after receipt, but reserve the right to hold for the following issue. Please write legibly. Please use only one word per space. Each word in a business name or address will count as one word.

Tear Sheets Will Not Be Sent To You For Your Classified Ad.

Page 5

e-Subscribe to the Northern Berks and East Penn Valley Merchandisers at: www.windsorpress.com

LIQUIDATION AUCTION
SMITH & SMITH GENERAL CONTRACTORS
POTTSVILLE RE, TOOLS, EQUIPMENT & SUPPLIES
Saturday, November 7, 2015 at 9:00 A.M.
Location: 1500 Seneca St., Pottsville, PA 17901.
RE: 2.11 acres m/l thereon erected a 50'x50' block bldg. & adjoining 35'x40' bldg. w/2nd flr. & more! This is a unique prop. It currently was used for showrm., office, storage & work area! The possibilities here are virtually endless. Take a look & bring your ideas! This auction is being held due to the owner's untimely death & his widow is very motivated to sell this prop. at the auction! **Inspect.:** To view prop. or to perform any tests phone: 570-345-8262 for an appt. Photos @ www.auctionzip.com I.D. #2712. **Terms:** 10% down day of auct., cash or good PA check, bal. on or before 45 days.
DERFLER'S AUCTION
ROBERT W. DERFLER
AUCTIONEER, AU2682-L
Pine Grove, PA • 570-345-8262

Selling For:
CAROL A. SMITH

PUBLIC AUCTION
COMPLETE LIQUIDATION SCHNECK'S MEAT MARKET
Thursday, November 5, 2015 at 4:00 PM
Location: 173 Hickory Rd., Pine Grove, PA 17963.
Equip.: All of the equip. is single phase, Butcher Boy B16 band saw, Hobart band saw, 5 meat slicers (2 auto. stackers), Leland 100-lb. mixer, Buffalo air stuffer, Hollymatic patty mach., 2 SS cooking kettles, propane burner, air steak tenderizer, Hobart 45 - 2 grinder, Butcher Boy grinder, United 2000-lb. track scale, 8' reach-in freezer, (2) 2-dr. coolers, old chest freezer, rolling SS cart, coffee grinder, 5 SS tbls., 3 meat cases w/remote compressors, 2 electronic scales, old store scale, 2 knife sharpeners, cooler racks, Toledo dial scale, skinning racks, elec. hoist, Russell splitting saw M59, SS track hooks, bacon hooks, cheese cutter, tubs & other related items! **Terms:** Cash or good PA check. Inspection day of auction from 1 PM or by chance. Photos @ www.auctionzip.com ID #2712. All of this equip. was in use until a month ago. After 78 yrs. in the meat business Schneck's has closed their doors! Everything sells down to the bare walls!
DERFLER'S AUCTION
ROBERT W. DERFLER AUCTIONEER, AU2682-L
Pine Grove, PA • 570-345-8262

DERFLER'S AUCTION
ANTIQUES, FURN., TOOLS, 1951 STUDEBAKER,
FORD EXPLORER, DOGGIE WASH &
BOUTIQUE INVENTORY
Friday, October 30, 2015 at 4:00 A.M.
Location: 786 Deturksville Rd., Pine Grove, PA 17963. 4 miles East of Pine Grove, PA on Rte. 443.
4 PM: Estate box lots, tools, outdr. items, weather permitting the yard will be full! There has to be at least 500 box lots here! A lot of real nice HH items out of 2 very clean estates!
5 PM: 200+ pcs. of furn., a wide variety see photos on the web. **7:30ish:** 1951 Studebaker Land Cruiser, very solid old car, not running; 1999 Ford Explorer (Former Haven Fire Car) & tandem axle utility trlr. **8 PM ish:** Poly dog washes, inventory & supplies from doggie wash & boutique, toys, 12 mining lanterns, tabletop antiques & lots more! **Terms:** 10% buyer's prem., cash or good PA check, VISA, Mastercard & Discover. **Inspect.:** Day of auction from 1 PM. View photos @ www.auctionzip.com I.D. #2712.
DERFLER'S AUCTION
ROBERT W. DERFLER AUCTIONEER, AU2682-L
Pine Grove, PA • 570-345-8262
Serving the area since 1987! RE & Estate Specialists!
Complete estate clean outs are available,
book now for our annual New Year's Day Auction!

Need
FAX service?

**We have
you
covered!**

The Windsor Press
INCORPORATED

SINCE 1958
6 N Third Street
P.O. Box 465
Hamburg, PA 19526-0465
610-562-2267 or 1-800-562-5521
FAX: 610-562-2770
www.windsorpress.com

**RECREATION/
SPORTING GOODS**

2012 Yamaha RS Vector Snowmobile. Studded Track, 1,100 miles Exc. Condition, \$8,000. Also, 2009 Triton Alum. Snowmobile Trailer, salt shield and spare, \$1,000. 610-562-8125.
I Buy Old Ammo., Hunting Licenses, Knives, Swords, Traps, Powder Horns, All Guns, Weapons and Related Gear. Serious Cash Paid. House Calls Made FREE: P.J. 610-417-0909.

**RECREATION/
SPORTING GOODS**

12' Wood Shuffleboard Table: Regulation size pukes, like new best offer over \$400; 610-780-8466.
T.Barker 12Ga. Double Barrel Damascus Steel Double Hammer Shotgun \$300 J.C. Higgins Sears and Roebuck Mod 41 Single Shot .22 Cal Rifle \$150 Crosman Mod 130 .22 Cal Pellet Gun Wooden Grips \$150 610-741-7021.

ANNOUNCEMENTS

Got Knee Pain? Back Pain? Shoulder Pain? Get a pain-relieving brace -little or NO cost to you. Medicare Patients Call Health Hotline Now! 1- 800-419-3684 (*178647).

ANNOUNCEMENTS

Lighthouse Community Church & Academy, 5 Penn St., Lyons, Pa. Call 610-682-2109 for Info, Sunday Service starts at 10 am. Join us for great contemporary worship!

Travel Companion Wanted to Tour and enjoy the USA by motorhome. Retired male 61 seeking travel companion. Reply PO Box 75, Lenhartsville PA 19534.



We have officially entered the Golden Age of the Internet, where having a website for your business is an absolute essential. So where's your website? The Windsor Press offers affordable website design and hosting of your new website. An effective website is the cornerstone of any small business's marketing strategy, offering fundamental information 24 hours a day. There are multiple reasons why you need a website today:



WEBSITES NEVER SLEEP
Websites never take a break, even after business hours are over, customers still have the opportunity to browse your business's website. A website will allow your business to be open 24 hours a day, every day of the year - that's the equivalent to having an employee work around the clock, even weekends and holidays!



"GOOGLE IT"
How many times have you heard "I'll Google it?" More than ever before, people are turning away from traditional means of finding information and looking online. Your business should be at customer's fingertips when they look on any online search engine.



INCREASES THE EFFECTIVENESS OF YOUR ADVERTISING

Print advertisements are definitely effective components in the advertising mix, but it's the website that strengthens your company's message. Once you have a website up and running, we recommend your print advertising include your website address.



INSTANT CREDIBILITY

Have you ever had difficulty making that sale? Or convincing someone that you are the real deal? Having a website is comparable to having an online business card, containing basic information on you and your offerings, along with a way to reach you.

CONTACT KATIE AT THE WINDSOR PRESS TODAY FOR YOUR NEW WEBSITE
Don't be so quick to dismiss your product as one that can't be sold online. Nowadays, there's very little that can't be sold over the internet. No matter the size of your business, it is crucial to have an online presence for customers to quickly and easily find out more about your business and the products or services you have to offer.

The Windsor Press
INCORPORATED

SINCE 1958
6 N Third St
PO Box 465
Hamburg PA 19526-0465
610-562-2267 or
1-800-562-5521
FAX: 610-562-2770
display@windsorpress.com
www.windsorpress.com

Having Guests for the King Frost Parade

Set an unforgettable spread that will be music to your budget with fine fixins' from

PETERS BROS. QUALITY LUNCHMEATS & CHEESES!

And don't forget a traditional parade favorite:

Peter Bros. Delicious

RING BOLOGNA, PICKLED TRIPE, SUMMER SAUSAGE, PICKLED HOT BOLOGNA AND MORE!!!



We've been serving the area with quality since 1940.

"A Family Tradition Since 1940"

PETERS BROS. MEAT MARKET, INC.

65 Penn St., Lenhartsville, PA 19534
610-562-2231 • 800-952-8541
Mon. - Fri. 7:00 a.m. to 6:00 p.m.
Sat. 7:00 a.m. to 5:00 p.m.
www.petersbrosmeats.com



FARM EQUIPMENT/
LIVESTOCK

HORSE BOARDING, self care and full care, indoor and outdoor arenas, trails on property. Von Dohren Stables, Oley, PA. 610-987-6136

MF 65 No multipower redone show shape, very good tires, engine Perkins, 1960 diesel \$3900 firm. Cash or certified check. Berks County. 610-562-3152

SEASONAL
EQUIPMENT

FOR SALE: 9'x6' Wooden Trailer, \$500 obo. Please call 610-285-4504.

SNOW BLOWER: 22" Ultra by Murray. 5Hp Tecumseh engine. 6 speed. \$300, 484-769-6593.

SEASONAL
EQUIPMENT

FOR SALE: 1986 John Deere 755 Tractor Diesel Engine, 2pt. Attachment, 60" mower deck, front mount sweeper brush, like new rear tires. Does not run, Sold as is. Leesport Boro will be accepting sealed bids for above listed item. Bids to be opened Nov. 18th, 2015, at council meeting. Call 610-926-2115 for further inquiries.

FOR SALE: John Deere 42" front mounted snow blower for a John Deere LT180 Tractor. Excellent shape, \$600 obo. Call 570-385-0137.

JOHN DEERE X500 Multi Torrain Tractor, 26hp, 54" mower deck, 245 hours, excellent condition, \$3750; 610-682-6215, leave message.

WELBILT HOMES, INC.



Other Models Starting at Only \$87,890!

FINANCING AVAILABLE
Learn More About Our Specifications Online
And Download a Free Brochure

15 Orchard Lane, Leesport, PA 19533 - 10 Minutes North of Reading • 10 Minutes South Of Hamburg
610.916.2020 **www.welbilthomes.net**

CAMBELTON

3485 sq. ft. • 4 Bedrooms
• 2 Baths • 2 Powder Rooms • 3-Car Garage

\$270,870, \$290,650 - Finished Room

"Custom Built On Your Lot"
All homes include basement

Over 28 Years with an A Plus Rating with BBB.



Sharing Knowledge. Building Trust.



Look to the people you know and trust for professional advice about insurance protection for your family. Contact us today for a free coverage comparison.



STRAUSSER Insurance Agency, Inc.

Serving Northern Berks For More Than 50 Years
401 South 4th S., Hamburg, PA 19526 • PH: 610-562-2048
www.strausserins.com

Office Hours: Mon. thru Fri. 8:00 am to 5:00 pm;
Sat. 8:00 to 12:00 Noon; Evenings by appointment



We Are A Proud Sponsor Of The



52nd King Frost Parade

AND ALSO THE PARTICIPATION OF THE

Hamburg Area High School Band

SATURDAY, OCT. 31, 2015

Leibensperger

FUNERAL HOMES, INC.

M. Domer Leibensperger, Supervisor;
Donna M. Leibensperger Parr, Branch Supervisor;
Todd J. Kennedy, Director;
Derek M. D. Leibensperger, Director

SERVING MORE CONVENIENTLY WITH TWO LOCATIONS:
HAMBURG - LEESPORT
610-562-7823 or 610-926-2737



SEASONAL
EQUIPMENT

THE BEAST 36" Snow blower, 1 year old, throws snow 40-50', 15hp motor, just winterized, asking \$1300; 610-823-4123.

Wanted To Buy- Hit & Miss engines, especially Pa. made- New Holland, Domestic, etc. Call 484-809-2422.

CHILDCARE

NEED DAYCARE? Look no further. CHESTNUT CHILD CARE provides a fun filled learning experience with younger toddler, toddler, and pre-school curriculum. Weekly themes and daily crafts. Many years experience caring for newborns. A home based daycare where your child will feel right at home. Full time opening. Open rain, snow, sleet or hail! Located in the Pines Development, off Rt. 61. Please call 570-573-4265.

RV'S/CAMPERS

1989 Nomad Camper, very good condition, sits along Pine Creek in Galeson PA. Excellent Fishing and Hunting. \$1500. Call 484-575-7063.

KEEP YOUR CAMPER IN GREAT CONDITION! Trailer, Inspection, leak detection, roofing, carpeting, plumbing & electrical, minor repairs, AC Installation, awning, heaters & refrigeration. Maiden Creek Marine & RV, 222 south of 662 Moselem Springs. www.maidencreekrv.com. 610-944-9994.

HELP WANTED

Busy tax office is looking for P/T receptionist/ processors. You will set the tone for our office. We are looking for someone with excellent interpersonal skills, managing incoming calls, scheduling appointments, and doing processor tasks. All applicants should have solid prior experience, but will train. The hours are 9:00am - 3:00pm and 3:00pm and 8:00pm M-F and Saturday 9:00am -4:00pm. We offer competitive salary. Please reply by submitting a cover letter and resume. Send to Beacon Tax Service, 3201 Pottsville Pike, Reading, PA 19605.

CNA's, LPN's, RN's & HHA's ProStat Healthcare has immediate Job Openings! We Offer Very Competitive Wages, Flexible Schedules, and Weekly Pay! Check Us Out Today! Call 610-736-9000 or visit us on-line www.prostathealthcare.com

HELP WANTED

Dishwasher Wanted: Friday & Saturday 6-10pm. Apply at Union House Port Clinton.

Driver - CDL-A, local work, dedicated truck, dedicated route, no touch, single stop and drop & hook, call 610-562-8603.

HELP WANTED: FT/ PT Bartender. Evenings & Weekends, 610-737-7499.

HELP WANTED

Full Time Maintenance Person Looking for an experienced person to do electrical, mechanical and welding. Benefits package. Apply at Fairmount Foundry Inc., Front & Pine Streets, Hamburg 19526.

Hostess/ Host, Servers. Full or part time. Apply in person Blue Mtn. Family Restaurant, Shartlesville.



P68 PELLET STOVE

Even Heat | Easiest to Maintain | Distinctive Features

- 68,000 BTUs — heats 1,500 to 3,900 square feet, based on climate and home efficiency
- 76 lb. hopper capacity
- Largest, most powerful heating stove in the P-Series

Kegerreis Stoves

7758 Rt. 183, Bernville, PA 19506
(610) 488-0890 • www.kegerreisstoves.com
sales@kegerreisstoves.com
Mon-Fri. 9-6 Thurs. 9-8 Sat. 9-1 • PA001654

PUBLIC AUCTION

FURNITURE, COLLECTIBLES, TOOLS, CAR, GUNS
Friday, October 30, 2015 at 3:00 PM

Location: Auction held in Beltzner Hall at the Kutztown Fairgrounds, 144 N. Whiteoak St., Kutztown, PA 19530.

ITEMS: Candle stand w/drawer, dry sink, oak washstand, oak clothes tree & other, dec. rocking chair & other, dec. dinette set & other, Hoosier-style cab., plant stands, camelback trunk, Dep. BRS & other, child's rocker, coffee & end tables, Buddy L dump truck & other early toys, Herber Service Station thermom. (Lenhartsville), rag rugs, quilts, vintage clothing, brass handbell, early Valentines & other paper pcs., buggy blankets, buttons, tin cookie cutters, military items inc. case numbers for military tribunals for Nazi war criminals at Murnburg & other items, Air Force uniform, jewelry, Dep. strawberry & apple, child's Hoosier, asst. kit. items, Cub Cadet 1110 riding mower, Lawn-Boy mower, Trac-Vac, Craftsman band saw, cut-off saw, Toro 924 snowblower, chipper shredder, machinist toolbox, ext. ladders, asst. hand & garden tools. **Guns:** Colt .38 pistol, .35 Rem. pump, Rem. mod. 722, 257 Roberts w/4x scope, Ithica 12-ga. side by side, LeFever 12-ga. side by side, Springfield mod. 52B .22 bolt, 12-ga. shotgun, asst. ammo., plus many other items. **Car:** 1993 Buick Skylark - 4 dr. **Terms:** Cash or PA check only. **Auction Note:** Nice quality auction. Car sold at approx. 6 PM followed by guns.

Auctioneer: DAVID P. LOEB **Auction For:**
AU-002753-L • 610-756-4260 **PAUL MILLER ESTATE**
Lenhartsville, PA 19534 **& OTHERS**

PUBLIC AUCTION

REAL ESTATE, FURN., COLLECTIBLES, TOOLS
Saturday, November 14, 2015 at 9:00 AM

Location: 9621 Mertztown Rd., Mertztown (Lehigh Co.), PA 19539. From Mertztown (near Atlas Minerals) take Mertztown Rd. to first prop. on the left after county line.

R.E.: Situated on 2.5 ac. m/l is a stone farmhouse, which has 2 kitchens, fam. rm. & LR & bath on 1st flr. 2nd flr. has 4 BRs & 2 full baths. Home has full attic & bsmnt. w/frpl. & outside entrance. House has radiator oil hot water heat. Prop. has lg. chicken house, which is currently being used as storage rental units. Prop. also has inground swimming pool and is in the East Penn School Dist. To view the prop. phone: 484-560-0481, 484-553-1779 or 484-239-1134. **Terms On R.E.:** 10% down day of auction. Bal. on or before 45 days.

Auctioneer: DAVID P. LOEB **Auction For:**
AU-002753-L • 610-756-4260 **SANDRA SCHEIRER**
Lenhartsville, PA 19534 **Atty.: Rebecca Young**

Grim's Hauling



Located at Grim's Trailers, Bowers
610.682.0830 Leave Message
484.256.2428
Monday thru Friday 8 am to 5 pm
Saturday 8 am to 3 pm

Topsoil 80/20 Mix 80% Topsoil & 20% Mushroom	\$25⁰⁰	per yd.
Mushroom Soil	\$12⁰⁰	per yd.
Red, Brown & Black Mulch (Dbl. Ground)	\$30⁰⁰	per yd.
Brown Natural Mulch	\$25⁰⁰	per yd.
Mason Sand	\$35⁰⁰	per yd.
3/4" Yellow Sandstone	\$50⁰⁰	per yd.
Red Stone (Red 1B)	\$45⁰⁰	per yd.
Red Stone (Red 2B)	\$40⁰⁰	per yd.
1-3" River Rock & 1"	\$45⁰⁰	per yd.
3/4 Modified, 2B Stone & 2A Stone	\$20⁰⁰	per yd.
#3 & 1B	\$25⁰⁰	per yd.
Screenings	\$20⁰⁰	per yd.

Equipment & Demolition Hauling
CALL FOR SPECIAL PRICING ON TRI-AXLE LOADS!



**Post Precision
Castings, Inc.**

HELP WANTED

PART-TIME SECURITY GUARD

3rd Shift Weekends and Holidays Only

Ideal candidate should be mechanically inclined and able to work independently.

Apply In Person:
Monday - Friday 8:00 am - 4:30 pm
21 Walnut Street, Strausstown, PA 19559
Phone 610-488-1011

EOE/M/F

Preemployment physical and drug screen required.

HELP WANTED

Grill Cook. Full time position with benefits. Must work nights and weekends. Pick up application or send resume to: Kauffman's BBQ Restaurant, 33 Gravel Pit Road, Bethel, PA 19507, 717-933-8415.

Hiring Full and Part time CDL Class A drivers. All local runs. Flexible schedule. Great part time position for Retired Drivers. Premier Fleet Services, 610-562-3585.

Home Health Aides: PT evenings/ weekends. Min 1 year experience required. Must be dependable, caring & conscientious with your own reliable transportation. **AARON HEALTHCARE 610-691-1000**

The path to your dream job begins with a college degree. Education Quarters offers a free college matching service. CALL 1-800-375-6219 (*168840).

HELP WANTED

HELP WANTED - Delivery Technician/ Warehouse Facilitator. Local appliance business is looking for a person to make deliveries, assist in set up of appliances both residential and commercial as well as work in our warehouse. The right person for this job will be able to drive vehicles as large as a 12 foot box truck (CDL not required), able to safely lift and move large, heavy appliances and have experience in plumbing, electrical, and carpentry. This is a part time job with opportunity for a full time 40 hour week. Email responses to jessica_lesher@verizon.net include your email address, phone number, previous work experience.

HARD OF HEARING?

Your Doctor Said,
"You Need a Hearing Aid"
But The Price Was Ridiculous.
YOU'RE RIGHT!



STARKEY • PHONAK • FINETONE • AUDINA
Direct Laboratory Discounts on Most Major Brands

HEARING AID OUTLET CENTER


"Personalized Service For Your Individual Needs"

Sales • Service • Repairs • All Makes & Models
Digitals • Programmables • Battery Less

610-929-9776

- Most Insurances Accepted
- Same Day Service / In-Home Service
- Satisfaction Guaranteed

4802 Kutztown Road, Temple, PA 19560
You can also visit us at our second location at The Leesport Market.



**Northeast Prestressed
Products, LLC**
Precast Concrete Technology

HIRING NOW!!!

CDL DRIVERS

NATURE OF WORK

The CDL Driver's primary responsibility is to transport materials and equipment to our various job sites in a safe and timely manner. The driver is responsible for adhering to all State, Federal and DOT regulations and will obtain his daily assignments from the Company's Dispatcher.

KEY RESPONSIBILITIES

The CDL Driver's primary responsibility is to transport materials and equipment to various job sites in a safe and timely manner. The driver is responsible for adhering to all State, Federal and DOT regulations and will obtain his daily assignments from the Company's Dispatcher.

TYPICAL DUTIES

- Including but not limited to:
 - Maintains work records, logs and timesheets.
 - Performs pre & post trip inspections.
 - Conveys loads to their destination in a safe and timely manner.
 - Inspects materials moving securement equipment such as cables, chains, binders and straps.
 - Assists with loading, unloading of equipment and materials and coordinates activities of workers helping to load and unload.
 - Reads and understands instruments on heavy trucking equipment.
 - Operates material moving, loading and unloading equipment.
 - Properly unloads materials and equipment to proper locations on job site or in the yard.
 - Normal work requires frequent or continuous lifting, bending, kneeling, reaching, pushing, pulling, climbing or similar body and limb movement.
 - Required to wear Company issued Personal Protective Equipment while on all job sites.
 - Must be flexible to constantly changing conditions - both as they relate to work schedule and project site conditions.
 - Must be able to operate in a team atmosphere and assist foremen and coworkers in performance of duties.
 - Responsible to work safely, assist in ensuring safe working conditions exist and report unsafe conditions to supervisor.

KNOWLEDGE, SKILLS AND ABILITIES:

- Basic knowledge of DOT
- Have experience in Transporting Double and Triple loads

ABILITY TO:

- Able to attend work on time as scheduled.
- Work varying shifts, weekends and holidays.
- Effectively handle lifting of various objects weighing up to 50 lbs.
- Work extended hours inside or outdoors in a variety of weather conditions.
- Follow written and verbal instructions, including manufacturers' service specifications.
- Communicate effectively verbally and in writing.


QUALIFICATIONS AND REQUIREMENTS

Class A CDL with Doubles and Triple endorsements. Must have a minimum of 2 years verifiable recent driving experience and a clean criminal and driving record. Preferred experience with heavy equipment or oversized loads.

Northeast Prestressed Products, LLC, a quality producer of prestressed/precast concrete bridge girders is currently seeking hard working, dependable individuals to work at our manufacturing facility in Cressona, PA. Competitive starting wage with advancement opportunity.

Northeast Prestressed Products, LLC offers a comprehensive benefit package, including Medical, Dental, Vision, FSA, PTO, Vacation, 401K and much more.

Applications can be obtained from our website
www.nppbeams.com
or at our Administration Office located at
121 River Street, Cressona, PA
Drug-Free Workplace
an Equal Opportunity Employer
M/F/H



DEAN R. ARNER, AUCTIONEER, LLC

PUBLIC ESTATE AUCTION

Sunday November 1, 2015 at 10:00 AM
Location: Andreas Station House, 42 Andreas Rd., Andreas, PA 18211.
Child's Hamilton 22 cal., huge elk rack, German bayonet, bear bow, Ballentine beer clock, brass sleigh bells, slipware plate, early campaign bed, theorem, native baskets, old lighting, old boxes, Marx toy town windup, beer adv., Hess trucks, early dome-top chest, old toys, advertising & much more! Check full listing & photos @ www.auctionzip.com ID# 21038.
DEAN R. ARNER AUCTIONEER, LLC
AY-002077L Ph.: 570-386-3389

HELP WANTED

INFINITY SECURITY Company has full time and part time positions available in the New Smithville Area. If interested please call 610-683-5221 for more information.

WAREHOUSE: Order Pickers, Packers and Material Handlers, Light lifting \$8/hr. Days, seasonal help until mid December. Gifts 'N Things, Fleetwood 610-944-1400.

SERVICES

UPHOLSTERY WORK DONE: Furniture, Car & Truck Seats, Replace foam in cushions, Recover Boat Seats, Make Custom Boat Covers, Restring Day & Night Shades, Restaurant Seats and Misc. Items. Call John Stetler Upholstering, Hours 8-5 610-488-7760, After 5 484-955-2436. 2485 Shartlesville Rd. Mohrsville. See our website at jjsupholstering.com.

Drivers, Class A

\$550 SIGN-ON BONUS

1 cpm PRODUCTIVITY BONUS

Round trips from E. PA
TEAMS - coast-to-coast
SOLOS - midwest, midsouth, TX

REQUIREMENTS:

Flatbed/Reefer/Van exp
Recent 2 years OTR with Class A CDL
Min. Age 24 with Good Driving Record

BENEFITS:

Plenty of Miles/Great Pay
Modern Equipment
Health/Life/401K Electives

BELL TRUCKING CO., INC.


Shoemakersville, PA
1-800-345-4115 x213
or Apply Online at www.belltrucking.com

CARRIER NEEDED TO DELIVER

THE NORTHERN BERKS
Merchandiser

LEESPORT WALKING ROUTE

Must Be Dependable!
Once A Week Delivery,
No Exceptions.
Call
Sue Wessner
610.562.1333



Don't miss your opportunity
to advertise in this popular holiday guide!

2015

Winter Fun and Holiday Shopping GUIDE

Featuring...

**WINTER ACTIVITIES,
HOLIDAY GIFT IDEAS AND COUPONS**

Your ad will appear in the November 18th editions of

BOTH

the East Penn Valley and Northern Berks

Merchandisers

Your choice:

**Full Page - \$840 *Save \$266!* 1/4 Page - \$210 *Save \$263!*
1/2 Page - \$420 *Save \$292!* 1/8 Page - \$105 *Save \$187!***

ONE PRICE!

Full Color & Both Merchandisers!

SAVE up to \$292

To place your ad in this exciting edition
or for more information, contact your
sales representative or our office at:

The Windsor Press
INCORPORATED



6 North Third Street
P.O. Box 465
Hamburg, PA 19526-0465
610-562-2267 or 1-800-562-5521
FAX: 610-562-2770
display@windsorpress.com
www.windsorpress.com



OH, WHAT FUN IT IS TO
SHOP

LAST CHANCE TO ADVERTISE!

Contact The Office Or Your East Penn Valley or
Northern Berks Merchandiser Sales Rep Today!!!



Come See The Largest “Fall Parade” in the East!

The Hamburg Jaycees proudly present their

52nd Annual KING FROST PARADE

Hamburg, Pennsylvania (Route 61 & I-78)

SATURDAY, OCTOBER 31, 2015 AT 7:00 P.M.

Rain Date: Saturday, November 7, 2015 at 7:00 p.m.

Download The Registration Form at: www.kingfrostparade.com

DIVISION ONE

- King Frost Parade Banner
- Speaker Truck Y-102 FM
- Rajah Shrine Mounted Patrol
- King Frost
- Banner Carrier - Leibensperger Funeral Homes, Inc.
- Hamburg Area High School Band
(sponsored by Leibensperger Funeral Homes, Inc.)
- VIST Financial - A Tompkins Community Bank
- Cub Pack 149, Spooky Villains
- Lions Club President, Inga Heffner
- Lions Club International
- Culture Shock
- Hamburg Homecoming King & Queen
Tyler Herber & Chelsea Forrest
- Pack 184, Loves USA & Supports All Those Who Serve
- Union Fire Co. #1 of Hamburg, Sponsorship Vehicle
- Belvedereers/Sentinel Alumni Drum Corps
(sponsored by Hamburg Fire Dept.)
- Norman & His Toys
- Cub Pack 144, Building Great Scouts
- Hamburg Hawks U9 Girls' Soccer
- Hamburg OYW, Chyanne Leshner
- Girl Scouts Unbirthday Party
- Girls Scouts In Wonderland

DIVISION TWO

- WIOV - Pennsylvania's Country Leader
- District Justice & Recorder of Deeds
Kim Bagenstose & Frederick Sheeler
- Berks County Controller, Sandy Graffius
- Allentown Hobo Band
(sponsored by Keystone Social Club, Hilltop, Reading Blue Mountain & Northern Railroad)
- Berks County OYW 2015, Isabelle Stull
- Joshua Corson
- Loyal Order of Moose, Hamburg Sponsor Vehicle
- Brandywine Heights Area High School Marching Band
(sponsored by Loyal Order of Moose, Hamburg)
- 2015 Berks Co. Dairy Princess & Little Miss Dairy Princess
Kalina Rhoads & Kelsie Burkhardt
- Adams & Bright, Your Prescription Store in Hamburg
- Cheryl Chickeys
- Rajah Shrine Potentate, Glen T. Sattazahn
- Rajah Shrine Chanters (sponsored by Dietrich's Men's Shop)
- Forks of The Delaware in Lizzies
- Rajah Motor Corps
- Rajah Shrine Clowns
- Lebanon County Shrine Club
- Rajah Shrine String Band (sponsored by Wagner Good VFW)
- Schuylkill County Fair Royalty
Megan Ditzier, Cadeline Schuettler, Julie Wycunas
- Wagner Good VFW, Salute Our Veterans

DIVISION THREE

- Great Clips
- Dance Pointe Studio
- Berks County Mustang Club,
12 Cars
- Cogle's Recycling, Inc.
- Commissioner Leinbach
- Furry Friends
- Oley Valley Marching Unit
- Smokey Celebrates Fall Season
- Apple Dumpling Queens 2015
- Candy's Homemade Ice Cream
- Happy Halloween from Habitat
- Outten Sponsorship Banner
- Freedom High School Patriot Band (sponsored by Outten)
- PA Jaycees State President, Jen Radzwillowicz
- Iron Pigs Mascot
- Impact Twirlers, Making An Impact
- Francis L. Werley, Inc.
- E.S. Savage, Sponsorship Vehicle
- Parkland HS Trojan Marching Band (sponsored by E.S. Savage)

DIVISION FOUR

- BCTV Dance Party
- Kathy Craine, WFMZ News Girl
- VJ Wood Recovery LLC
- Hassler Diesel Performance
- A.R. Adam and Son
- Grube's Dairy Store
- Drummers With Attitude
- Always Towing, LLC
- Fresh Life
- Yuengling's Ice Cream
- Fleetwood Area High School Band
(sponsored by Adams & Bright)
- Miss Kempton Fair Amanda Rice, Sara Turner, & Jordan Keller
- Wounded Warrior Project
- Steam Engine
- Joe Leone Coldwell Banker Realtor Banner
- Santa Claus (sponsored by Joe Leone Coldwell Banker Realtor)
- Parade Committee Haywagon

Subject to change

**Still
Time
To Enter
The
Parade**



The King Frost Parade is sponsored by the Hamburg Jaycees through donations from local businesses, organizations and pin sales.

Souvenir King Frost Pins (current and past) are available to purchase along with sweatshirts. Stop by our registration trailer.

Thank You, The Hamburg Jaycees
Drive Safely

OUT ON THE TOWN

HAMBURG GAME ASSOC. SPORTSMAN'S CLUB

KATHY'S KITCHEN IS OPEN!
Friday - 10 am to 6 pm
Friday Specials
Call In and Takeout Orders Welcome

Breakfast: English Muffin w/Egg, Bacon or Ham & Cheese
Wed. 10-28-15: Haluski
Thurs. 10-29-15: Shepherd's Pie
Fri. 10-30-15: Veal Parmesan Sandwich
Fish Sandwich
Mon. 11-2-15: Kathy's Homemade Chicken Pot Pie
Tues. 11-3-15: Fried Chicken with Homemade Mac & Cheese
CALL OR STOP BY TO RESERVE YOUR FRIDAY SPECIAL
Coming:
Fri. 11-6-15: Baby Back Ribs w/Fries & Slaw
Mon. 11-9-15: Kathy's Homemade Pig Stomach
Fri. 11-13-15: Steak w/ Twice Baked Potato & Salad

KITCHEN IS OPEN TO NON-MEMBERS

BREAKFAST SUNDAY, NOV. 8
7 am-11 am

CLUB MONTHLY MEETING
Mon., Nov. 2 7:00 p.m.
Nominations & Election of Officers & Directors

PLEASE FOLLOW US ON FACEBOOK
www.facebook.com/hamburggame

935 N. FIFTH ST., HAMBURG • 610-562-3532
CLUB HOURS: MON. thru THURS. 10 am to 2 am
Fri. 10 am to 3 am; Sat. 10 am to 3 am; Sun. 10 am to ?

BEHLER-HEIN AMERICAN LEGION POST #637
650 Franklin St. • Hamburg, PA

UPCOMING EVENTS:
Nov. 11 - Luncheon for all Veterans and families 12:00 to 2:00 pm
Nov. 15 - Wings 12:00 to 4:00 pm
Nov. 25 - Boyd's Cafe 7:00 to 10:00 pm

ALL WELCOME
Open To The Public

DEUTSCH BOY (DUTCH CORNER)

HOURS: Wed., Thurs. & Fri. 4 PM-8 PM;
Sat. 11:30 AM-8 PM;
Sun. 11:30 AM-7 PM
Closed Mondays & Tuesdays

Sandwiches
Platters
Homemade Desserts
STEVE STETZLER, Owner

LENHARTSVILLE, PA • 610-562-8520

Wed., Thurs. & Fri. Oct. 28, 29 & 30
Pork Mit Kraut

Wed., Thurs. & Fri. Nov. 4, 5 & 6
Corn Pie

★ Holiday Pie List Coming Soon ★

RAJAH SHRINE BINGO

Every Thursday
Doors open at 5:00,
Bingo starts at 6:30
*Refreshments available for purchase
- Smoke Free -

RAJAH SHRINE COMPLEX
221 Orchard Road,
Reading, PA 19605
www.rajahshrine.org
AIR CONDITIONED FACILITIES

For information and directions
call: 610-916-9000
*near Ontelaunee Dam off Rt. 73 in Blandon

FREE GIVEAWAY EACH WEEK!

*proceeds benefit Rajah Shrine and are not deductible as charitable donations
Manager - W. Trautman

Oldies Dance
with
DJ - M.Z. HAMMER
& Catered Buffet
Saturday, Nov. 14
5:00 to 9:00 pm
at
JOURNEY CAFE
3rd & Pine Sts., Hamburg

Tickets are \$12.50
purchase by Nov. 7
Call 610.562.8034

The Westy Bar & Grill
Fun Food & Spirits

Locally Owned & Operated For 18 Years
Where The Locals Go!

Reservations For Parties of 8 or more
www.westybarandgrill.com
610-562-3777
Takeout - 610-562-9303

ATM Available

610-562-3777 - 279 West State St.

Join The Westy Loyalty Club
Ask Your Server For Details

NEW! CRAFT BEERS ON TAP
Rotating Weekly

Follow Us On Facebook

Entertainment: Thursday, Oct. 29
10:00 p.m. • No Cover
Big Show Karaoke

Biggest Best Wings In Berks

Closing For Remodeling & Repairs
Sat., Oct. 31 thru Sun., Nov. 8
Reopening
Mon., Nov. 9 - 11:00 AM

J. HUMMEL'S RESTAURANT
Bar & Gathering Place

Take I-78 to Exit 35 (old exit 11) Rt. 143, Lenhartsville

DINING ROOM:
Sun., Tues. & Wed. 11:00 AM to 8:00 PM;
Thurs., Fri., Sat. 11:00 AM to 9:00 PM.

BAR HOURS:
Sun., Tues. & Wed. 11:00 AM to 8:00 PM;
Thurs. - Sat. Open 'til 1:00 AM;
CLOSED MONDAYS

Our Featured Burgers

Breakfast Burger
Pork BBQ Burger

10% Senior Discount
Every Tuesday & Wednesday

FOLLOW US ON FACEBOOK
For Great Specials!

For More Info Check Out Our Website: cjhummels.com

This Weekend:
AUTUMN SALAD \$10²⁹
CHICKEN MARSALA \$10⁹⁹
YUENGLING SEAFOOD PLATTER .. \$14³⁹

Sunday Lunch Specials:
Roast Turkey, Baked Ham, Roast Beef, Smoked Sausage, Breaded Shrimp, Honey Dipped Chicken, Breaded Veal, (Includes 2 Sides)
ALSO AVAILABLE WEDNESDAY AFTER 4:00 PM

All Priced \$7⁵⁹

Catering:
Call Us To Cater Your Special Event!
Individual Banquet Rooms Available For 10-300 People

C.J. Hummel's Entertainment

WED., OCT. 28 7:00 to 9:00 PM
Live Music with **Chuck Cahoe**

THURS., OCT. 29
Line Dancing with **D.J. "Nugget"**
21+ (Club Night)
11:00 PM With **D.J. "Shawn"**

FRI., OCT. 30
HALLOWEEN PARTY
Over 21
Line Dancing & All Request
w/D.J. "Shawn"

SAT., OCT. 31 9:30 PM
Open Jukebox

PAPPY T's PUB

Gift Certificates Available • www.pappyts.com

Delicious Pub-fare
Check Out Our New Menu!

12 Beers on Tap
Your Favorite Cocktails

PAPPY T'S SPECIALS
Served Thurs., Oct. 29 to Wed., Nov. 4, 2015

HOMEMADE STUFFED PEPPER SOUP
GRUYERE FONDUE BREAD BOWL
(Imported Gruyere Cheese Cooked w/White Wine, Brandy & a Hint of Nutmeg Served Inside a Toasted Bread Bowl)

ITALIAN ROASTED PORK SANDWICH
(Our Slow Roasted Dry-Rubbed Boston Butt Topped w/Sauteed Spinach, Fresh Garlic & Sharp Provolone Cheese)
Served On a Country Roll w/Freshly Cut Seasoned Fries & Garlic Dill Pickles On The Side

FRESH AHI TUNA TACOS
(Seared Medium Rare Ahi Tuna Steak Inside 2 Flour Tortillas w/Guacamole, Shredded Cabbage, Red Onion & Freshly Squeezed Lime) Served w/Sweet Maui Onion Chips & Garlic Dill Pickles On The Side

GRILLED SIRLOIN STEAK SANDWICH
(8 oz. Freshly Cut Montreal Seasoned Sirloin Steak Cooked To Your Liking & Topped w/Sauteed Mushrooms & Onions On a Toasted Garlic French Baguette) Served w/Our Homemade Potato Chips & Garlic Dill Pickles On The Side

HOUSEMADE ITALIAN TRIO
(Chicken Parmesan, Fettuccine Alfredo & Lasagna) Served w/Garlic Breadsticks & Garden Salad

SURF & TURF
(Filet Mignon & Broiled Sea Scallops Combo) Served w/Your Choice of 2 Sides & Garden Salad

OUR LOCAL HANDMADE DESSERTS
Baileys Irish Cream Mousse Cake • Pumpkin Cheesecake Cake • Carrot Cake

50¢ WINGS During All NFL Football Games

HAPPY HOUR: Monday thru Friday 5:00 pm to 7:00 pm

We Are A Nonsmoking Establishment
50 Industrial Drive, Hamburg • 610.562.5645
(Behind The Microtel Inn & Suites - Across From Cabelas)
OPEN 7 DAYS A WEEK - Bar Hours: Sun. 11 AM till 1 AM;
Mon. thru Thurs. 3 PM till 2 AM; Fri. & Sat. 11 AM till 2 AM,
Kitchen - Sun. 11 AM till 10 PM; Mon. thru Thurs. 3 PM till 10 PM; Fri. & Sat. 11 AM till 10 PM

BIKER FRIENDLY BAR

MICROTEL INN & SUITES
•Conference Room • Game Room • Jacuzzi Suites
WIRELESS HIGH SPEED INTERNET

WEEKLY FOOD SPECIALS

DAILY DRINK SPECIALS
\$2.00 Well Liquor - All Day! Every Day!

- COUPON -

10% OFF
Food Purchase
PAPPY T'S PUB
Meals Only. Beverages Not Included.
Not to be combined with any other discount.
Coupon good Thurs., Oct. 29 - Wed., Nov. 4, 2015

ENTERTAINMENT
WED., OCT. 28: 9:00 pm-12:00 am
BIG SHOW KARAOKE w/JIM
THURS., OCT. 29: 8:00 pm-11:00 pm
OPEN MIC w/CHIP
FRI., OCT. 30: 9:30 pm-12:30 am
HALLOWEEN BASH "MONDAY'S MISTRESS"
Wear Your Costume
TUES., NOV. 3: 7:30 pm-???
FREE TEXAS HOLD'EM POKER

BASKET BINGO

Sunday, Nov. 8, 2015
Doors Open at 11:30 AM
Bingo Starts at 1:00 PM

Located: Cressona Goodwill Fire Company

ALL PROCEEDS BENEFIT THE MUSCULAR DYSTROPHY ASSOCIATION

\$20 per ticket (includes 20 Bingo games)

- Various door prizes will also be drawn throughout the day
- There will be 5 specials games for an additional \$5
- Raffles will be available for an additional fee

REFRESHMENTS WILL BE AVAILABLE FOR PURCHASE

Sponsored by: **Schaeffer's Harley-Davidson and Deer Lake H.O.G.**

Tickets can be purchased at Schaeffer's Harley-Davidson or mail your request with payment to:
Schaeffer's Harley-Davidson Attn: Basket Bingo
1123 Brick Hill Rd., Orwigsburg, PA 17961
Questions? Call Denise at 570-366-0143 ext 706

MAKE A MUSCLE MAKE A DIFFERENCE

OUT ON THE TOWN

THANKSGIVING DAY DINNERS

DELIVERED RIGHT TO YOUR HOME
OR AVAILABLE FOR PICK-UP



Let Us Do
The Cooking!

INCLUDES:

Fresh Turkey or Ham – Gravy – Real Mashed Potatoes
Sweet Potatoes – Choice of Bread or Potato Filling
Choice of Corn or Peas – Cole Slaw
Fresh Fruit Salad – Cranberry Sauce
Fresh Vegetables with Dip – Rolls & Butter
Choice of Apple or Pumpkin Pies

All items
are available
Ala Carte

This Meal is
also available
for pick-up

ALSO AVAILABLE
FOR PICK-UP:

Kielbasa
Gravy by the quart
Halupkies
City Chicken
Coleslaw

Bread and Potato Filling
Potato & Macaroni Salad
Rice Pudding
Pumpkin Pies
Pineapple Glazed Ham

Wrap Tray
Cookie Tray
Fruit Tray
Shrimp Tray
Meat & Cheese Tray

\$15.95 Plus Tax & Delivery
Minimum 10 People

— Please place your order before November 20th! —

Call to Place Your Order

HESS CATERING 570-385-3578 or 570-385-5058

ELECTION DAY

Pork Loin & Sauerkraut Dinner

Mashed Potatoes • Carrots • Dessert

TUESDAY, NOV. 3, 2015
11 a.m. till 7 p.m.

Adults \$8.00, Children 12 And Under Free
Public Invited - Takeouts Available

BENEFITS SCHUYLKILL MASONIC TEMPLE ASSN.
1000 E. Market St., Orwigsburg, PA 570.366.1385

LEESPORT FARMERS MARKET

EVERY WEDNESDAY
8 A.M. to 7 P.M.

Flea Market 7:00 A.M.
Livestock Auction 1:00 P.M.

8 miles north of Reading, PA
At the North End of Leesport
Turn East Off Rt. 61
610-926-1307
www.leesportmarket.com

Halloween Trick or Treat Treasure Hunt, Parade & Costume Contest

Wed., Oct. 28
10:00 a.m. to 6:30 p.m.

Halloween Treasure Hunt

Children 12 & under,
dressed in costume
and accompanied by an adult,
can pick up a trick or treat
treasure map near office.
Drawing - prizes to be awarded.

Parade & Costume Contest

5:30 p.m. to 6:30 p.m.

Children interested in
costume contest must register
near the goat pen by 5 p.m.

Sun., Nov. 1
7:00 a.m. to 1:00 p.m.

Flea Market & Toy Show

Flea Market Every 1st & 3rd
Sunday thru Dec. 6th

Fall Festival

Pioneer EVERGREEN FARMS

Family Fun

Great Family Fun In a Country Setting!

OPEN
thru November 1
Fri., 5 p.m. to 9 p.m.; Sat., 12 p.m. to 9 p.m.;
Sun., 12 p.m. to 7 p.m.
*Open Columbus Day, October 12th: 12 p.m. to 7 p.m.

38 Great Activities

Scenic Mountain Hayride

Hayride Reservations Recommended

Pumpkin Patch

Horse & Pony Rides

Water Balloon Launcher

Cow Milking Contest

Caterpillar Crawl

Corn Crib

Obstacle Course Bounce House

Fossil Car Go-Karts

My Little Farm

New Gypsy's Gem Mining

60' Tube Slide

• Bucking Bronco
• 3-Acre Tree Maze
• Petting Zoo
• Caterpillar Crawl
• 200' Mountain Slide
• Tot Lot Playground
• Mountain Roll

HOME OF FORGET-ME-NOT FLORIST & GIFT SHOP

Call 570-366-2619 or
order online 24/7 at:
www.OrwigsburgFlorist.com

Flower Shop and Gift Shop Hours:
Monday thru Friday 9:00 a.m. to 5:00 p.m.
- Open During Fall Festival -

159 East Adamsdale Road, Orwigsburg, PA 17961
570-366-2619 www.PioneerEvergreenFarms.com
Presented by Sculpt Hill Enterprises, LLC

Our menu offers
a variety of
tasty fall foods
including sandwiches,
homemade soups
and homemade
apple dumplings.

PRIVATE PARTIES

We Specialize In
Group Parties
And Events

Excellent for: Birthday Parties,
Organizations, Scout Troops,
Senior Groups

SOMETHING FOR EVERYONE

To Pottsville
To Orwigsburg
To Cabela's
From Harrisburg

We're Easy To Find.
From Rt. 61 turn onto
Adamsdale Road
and drive a short
distance to our
red barn!

Bailey Wood Products' 3rd Annual

Fall Woodworker's Fair

Woodworker's Booths - Christmas Shopping
Demonstrations - Food Vendors - Raffle - Crafts
PA Forest Products Association Woodmobile

Bailey Wood Products, 441 Mountain Road, Kempton, PA 19529
November 7th and 8th, 2015 - Rain or Shine - Indoor Events
10 a.m. to 4 p.m. on Saturday and Sunday - Free Admission



Visit www.baileywp.com to see a video of last year's fair



FREE
ADMISSION

SHOEMAKERSVILLE FIRE CO. HAPPENINGS

300 CHURCH AVE., SHOEMAKERSVILLE 610.562.3998



Check Out Our
Daily
Specials

ATM INSIDE

Happy Hour
Everyday

FREE
WIFI

BANQUET HALL

★ UNDER NEW MANAGEMENT ★
NOW BOOKING FOR
2015 - 2016 - 2017
AIR CONDITIONED - SEATS 400
STAGE & DANCE FLOOR
ATMOSPHERE
AMPLE OFF-STREET PARKING
AVAILABLE FOR
WEDDING RECEPTIONS,
MEETINGS & BANQUETS
FOR BANQUET HALL INFO.
Call: 610.562.8096
E-mail: shoeybanquethall40@aol.com

Social Quarter Hours - Opening Noon Daily
Every Other Tuesday - 5:30 pm to 10 pm - MEMBERS ONLY
WINGS Eat-In: Doz. \$6.00 Takeout: Doz. \$7.50
NEXT WINGS TUES., NOV. 3

SHRIMP NIGHT, KARAOKE, MUSIC & BINGO
ALL OPEN TO PUBLIC - SMOKE-FREE

Friday, October 30 & Saturday, October 31:
8:00 pm to 10:00 pm
Open Jukebox & Pool

KARAOKE: 1st & 3rd Friday - 9:00 pm to 11:30 pm

Fri., Oct. 30: 8:00 pm to 10:00 pm
HALLOWEEN COSTUME PARTY

BINGO
SUNDAY AFTERNOON BINGO Nov. 1
Doors Open 12 Noon Bingo Starts @ 2 PM
★ NOVEMBER 1 KITCHEN ★
SURPRISE!
For info, please call 610-568-4354 • Mgr.: Jackie Weiler

ALL-YOU-CAN-EAT BREAKFAST
Sat., Nov. 7 - 7:30 to 10:30 am
\$8.00
Children 6-12 - \$4.50, 5 & Under FREE

BREAKFAST

Mackerel, Ham, Sausage,
Pancakes, Eggs, Home Fries,
Scrapple, S.O.S.,
Bacon & French Toast

SUNDAY
NOV. 1, 2015
7:00 a.m. to 12 noon

LANDINGVILLE COMMUNITY FIRE COMPANY
For Hall Rental
Call 570.366.2572

TRICK OR TREAT

BEHLER HEIN POST 637, HAMBURG LEGION
650 Franklin Street, Hamburg, PA 19526

**WILL BE HANDING OUT TREATS
TO ALL GHOSTS & GOBLINS:**
Wednesday, October 28 - 6 to 8 pm

PORT CLINTON FIRE CO.

610-562-5499

Holiday Chinese Auction

FRIDAY, NOVEMBER 6, 4 pm - 8 pm
SATURDAY, NOVEMBER 7, 2 pm - 6 pm

Drawings - Sat. 6:30 pm
Food & Drinks Available
For Purchase

VENDORS including
Tastefully Simple, Thirty-One,
Brad's Wire Trees, Pampered Chef

ALL PROCEEDS BENEFIT PCFC FIREMAN'S FUND

BLUE MOUNTAIN

Family Restaurant & Banquet Facilities

ROADSIDE DRIVE, SHARTLESVILLE - EXIT 23, I-78 610-488-0353

OPEN 6:30 A.M. to 10:00 P.M.
Serving Cocktails
• Beer • Wine
• BANQUETS WELCOME
• GIFT CERTIFICATES
A GREAT IDEA

~ WEEKEND SPECIALS ~

Sauteed Chicken Breast w/Ham & 3 Cheeses w/Rice \$12.95
North Atlantic Seafood Combo Jumbo Scallops, Haddock & Crab Cake \$14.95
Sliced London Broil w/Sauteed Onions On Toast..... \$12.50
Baked Virginia Smoked Ham w/Pineapple Raisin Sauce \$11.95

~ 1ST SUNDAY OF EVERY MONTH ~
GRAND BREAKFAST BUFFET
THIS SUN., NOV. 1, 2015 - 8:00 AM to 12:30 PM

THANKSGIVING TRADITIONAL BUFFET
With All Of The Trimmings and Desserts

FULL COURSE HAPPY HOUR DINNERS
Monday-Thursday 2pm to 4pm **\$8.50**

EVERY THURSDAY
Land & Sea
BUFFET
\$13.95
With Salad Bar & Dessert

Mobil Approved And Suggested

tripadvisor

OUT ON THE TOWN

**STRAUSSTOWN
ROD & GUN CLUB
HALLOWEEN PARTY**
Friday, October 30
Music By **"6X9"**
Bring Your Favorite Covered Dish - Come In Costume
See Bartender for Covered Dish Sign-up Sheet
*Cover Charge \$3.00 for Nonmembers Only.
Nonmembers Must Be Accompanied By a Member.*

THE FABULOUS GREASEBAND®

proudly presented by **The Centre Township
Land Protection Foundation**
Sat., Nov. 21, 2015
8:00 p.m. until 11:00 p.m. Doors open at 7:00 p.m.
Leesport Farmers Market
Leesport, PA
Tickets \$20.00 (Tickets at door \$22.00 - if available)
For Ticket Info Call: 610-926-4005
BYOB...Ticket includes SODA, Water, Coffee, Setups & SNACKS
Please Drink Responsibly...This is a nonsmoking event...No Refunds
RESERVED SEATING WHEN YOU BUY 8 OR MORE TICKETS!!

Shartlesville Lions Club
BREAKFAST BENEFIT
Sunday, Nov. 1, 2015 8 a.m. to 11 a.m.
Haag's Hotel (3rd & Main St., Shartlesville)
Vision Resource Center, Family Promise,
Leader Dog, Moments of Peace Adv.
Adults - \$12; 7 to 12 - \$9; 3 to 6 - \$7; Under 3 - Free
Tickets 610-488-1984, 717-933-4028 or on premises.

*** UNDER NEW MANAGEMENT ***
The Hamburg **STRAND** Theater
Fri., Oct. 30 through Mon., Nov. 2 & Thurs., Nov. 5
"GOOSEBUMPS"
Thursday, Oct. 29 - **"THE MARTIAN"** - 7 pm
SPECIAL KING FROST SHOWING
Sat., Oct. 31 - 11:30 a.m. Only
"GOOSEBUMPS"
Showtimes: Thurs. - Mon. 7 pm; Matinee Sat. & Sun. 4 pm
6 S. 4th St., Hamburg, PA • 610-562-4750

Jerry's Classic Cars & Collectibles Museum

Relive the 50's & 60's with
over 20,000 items....
Open May thru October
Friday-Saturday-Sunday
12 to 5pm
Special group rates available
394 South Centre St, Pottville, PA 17901
888-802-6605 or 570-622-9510
www.jerrysmuseum.com
"Something for Everyone"

**Want a Night of
NO COOKING &
NO CLEANUP?**
Come And Join The
**AUBURN
CHURCH OF GOD**
238 Market Street
Auburn, PA 17922
**For Our FREE
COMMUNITY DINNER**
Sat., Oct. 31
4 p.m. to 6 p.m.
We will be serving
Pot Pie, Dessert and a Drink.
Donations Accepted But Not Required.


VIRGINVILLEHOTEL.COM
610-562-7072
CLOSED Mon. & Tues.,
Wed. & Thurs. 3:30 p.m. to 9 p.m.
Fri. & Sat. 12 noon to 9 p.m.
Sun. 12 noon to 7 p.m.
ALL-YOU-CAN-EAT SPECIAL:
WEDNESDAY & THURSDAY, OCT. 28 & OCT. 29
Clam Corn Pie
Located In The Village Of Virginville Rt. 143
Just 10 Minutes From I-78 or Rt. 222
- OCTOBER MIDWEEK SPECIAL -
Every Wednesday & Thursday
PORK & SAUERKRAUT w/ MASHED POTATOES
- WEDNESDAYS ARE S&S -
STEAK & SHRIMP w/ 1 SIDE...\$18.50
- WEEKEND SPECIALS -
APPLE JACK PORK LOIN
BREADED FISHERMAN'S PLATTER
PASTA CUBANA
It's Not Too Early To Make Your
Thanksgiving Dinner Reservation!
Visit Our Website For Menu www.virginvillehotel.com

Craftsman Tool Bingo
All Proceeds Benefit
Leesport Fire Company Building Fund
25 Games For Only \$25

Family Fun
All Ages
Welcome

25 Games For Only \$25

Family Fun
All Ages
Welcome
Grand Prize Last Game Of The Afternoon
258 Piece Craftsman Tool Set
November 14, 2015
Doors Open at 1:00 pm; Bingo Starts at 3:00 PM
Leesport Fire Company Social Hall (11 S. Canal St.)
For Tickets Contact 610-926-1251 or Stop By Our Social Quarters
Only 150 Tickets Are Being Sold
Food & Drinks Available For Purchase (Please No Outside Food or Drink)

**BELLEMAN'S CHURCH
Christmas
Bazaar**
in the Fellowship Hall
FRIDAY, NOV. 6, 2015
8:30 a.m. to 7:00 p.m.
SATURDAY, NOV. 7, 2015
8:30 a.m. to 1:00 p.m.
3540 Belleman's Church Rd., Mohrsville
610.926.4280
*Crafts
*Pastries
*Breakfast,
Lunch & Dinner
*Homemade Breads
*Candy
*Homemade Foods Served
*Soups *BBQ
*Chicken Pot Pie Platter
*Sandwiches & More
*Flea Market

**KAUFFMAN'S
BAR-B-Q RESTAURANT**

GRAVEL PIT ROAD, HALFWAY BETWEEN BETHEL &
STRAUSSTOWN OFF OLD RT. 22 • PH: 717-933-8415
Hours: Wed., Thurs. & Fri. 4 - 9 pm; Sat. & Sun. 11 am - 9 pm
Closed Mon. & Tues.
~ SPECIAL ~
Wed., Oct. 28, Thurs., Oct. 29 & Fri., Oct. 30
Baked Beef Heart
LAST WEEK FOR SOFT ICE CREAM • Miniature Golf Closed For The Season

Slippers... Toys... Food...
Delivery People... Frisbees...
Bones... Hydrants...



You can find what you are
looking for in our online edition!

www.windsorpress.com • www.epvmerchandiser.com • www.nbmerchandiser.com

JOHN D. SMITH, INC.

10 Ballfield Lane, Fleetwood, PA 19522 • 610-944-8618

PA4248 & Master Plumbers License #146

Plumbing • Heating - Pumps
Water Conditioning
Sheet Metal Work

Established In
1947

SERVICES

FREE SCRAP Metal Removal. Refrigerators, AC's, and all metal. Call anytime. 610-698-2284.

SERVICES

PROPERTY CLEAN OUTS, Lowest Rates! 15 years experience. Call 610-921-5474.

SERVICES

HOME REPAIR & REMODELING: We Offer Full Home Services from Small Repairs to Complete Homes. Call Us about your Project! Martin Construction 610-683-6120.

Maiden Creek Marine custom boat covers made on site, covers, bow covers, cockpit covers, repairs Quality work, 28 yrs experience. We know what boaters need and expect 610-944-9994.

MONARCH PAINTING LLC Located in Hamburg PA. Residential Interiors are our Specialty. Call for a free estimate. Cell 908-343-3498.

PET CREMATION Services Peach Tree Cremation Services, LLC, Leesport. Call Derek M.D. Leibensperger, 610-926-2737. Family Owned & Operated.

COOPER WEATHER-MASTER ST2**Tri-Polymer Blend Tread Compound**

Specially formulated for excellent winter traction while maintaining wet and dry performance and treadwear.

Enhanced Studded Performance

A new stud pin hole design improves stud retention and the number has been increased allowing for the use of a greater number of studs for better traction on ice. The stud size is conveniently molded into the sidewall for easy reference.

COOPERTIRES**Computer-Optimized Random Pitch Sequence**

The tread pitch sequence has been computer-optimized to reduce tread related tire noise for increased riding comfort.

M&S Rated



Meets RMA severe snow definition.

KANTNER'S TIRE SERVICE, INC.

230 South Franklin St. **SHOEMAKERSVILLE**
 HOURS: MON. THRU FRI. 7 TO 5; SAT. 7 TO 12
 GLENN ROBERTS www.kantnerstire.com 610-562-2567

**OUT-
THE-DOOR
TIRE PRICES**

All Tire Prices Include
Mounting, Balancing,
And New Valve Stem

PUBLIC AUCTION

BLUE DECORATED STONEWARE JAR, HEPPLEWHITE BLANKET CHEST, STACKABLE BOOKCASE, EARLY LIDDED DRY SINK, ANTIQUE & PRIMITIVE TOOLS, BUTCHER BOY BANDSAW, CRAFTSMAN & SIMPLICITY LAWN TRACTORS
Friday, October 30, 2015 at 1:30 PM

Location: Saucony Hall, 85 Industrial Ave., Kutztown, PA 19530. From E. Main St. in Kutztown, turn onto Willow St., 1 block, right onto Industrial Ave. to Hall on right.

Furn. (1:30): Hepplewhite blanket chest o/drws.; early lidded dry sink; 3-pc. cherry BDRS; 4-pc. Kling mpl. BDRS; 5-section stackable bookcase; rnd. oak pdstl. tbl.; mpl. hutches; 2 wd. boxes, 1 w/heart shaped wrought iron hinges; Depr. drssr.; oak washstand; mpl. ch. drws.; mrbl. top washstand; Empire wint. open-btm. washstand; Vict. oval marble top stand; turned leg stand; sq. china cbnt.; oak mirrored chiffonier; oak bureau; cherry mirrored hanging shelf; ch. of drws.; Amana refrig.; sm. Frigidaire ch. freezer; Affinity frnt-load washer; Hotpoint dryer.

Antqs. & Collectibles (2:45): Seagreaves pottery dish; Blanchard pottery; pottery umbrella stand; jardinieres; pedestals; blue dec. stoneware jar; 4-gal. blue bird dec. jug; sm. Redware crock; Ironstone; Mallard platter & plates; Majolica plate; Nippon; Bavarian game bird bowl; Fenton glass pcs.; Greek Key, Grape & Cable, Hearts & Flowers bowls & other Carnival glass; hand-pntd. vase; green Depr. glass mixer; Geo. Springer pntd. plates; sil-verplate tea set; Gorham sterling & Baldwin brass candle holders; Manning Bowman coffee perco, sugar & creamer; copper coffee pot; box coffee grinder; Taplin Mfg. egg beater; Gilchrist #30 & 31 ice cream dippers; 1895 Gem #8 ice cream dipper; baskets; kero. lights; CI dog doorstop; CI "State Bank" coin bank; Russell & Erwin No. 1 CI tobacco chopper; Enterprise saus. stuffer; CI counter scale; 4 prong wdn. fork; spice box; Howard Miller shelf clock; Seth Thomas weight-driven wall clock; Swiss décor. smoking pipes; bronze buffalo & elk sculpture; Ruppert's & Stegmaier's beer trays; 390 A5M bisque head jointed doll; Betty Jane Carter dolls; Mantua's Gay Oldtimer train kit IOB; Tonka dump trks.; Park Texaco tank trk.; accordion; vintage fabric, trims, linens, clothing, purses & hats; hankies; hooked & braided rugs. **Antq. Tools (3:45):** Gifford Wd. Co. ice axe; Swift & Company crate hammer; Belknap & Firestone hatchets; chamfer knives; Coopers & other draw knives; N.W. Arlington & other bit-stocks; corner brace; barking spuds; mortising axe; shipwrights adze; signed broad axe; reamers; 8 asstd. Blacksmith's tongues; Frow; asstd. wdn. molding planes; Union No. 41 mldng. & Stanley No. 50 planes; tenon drill; wdn. string winder. **Trctrs. & Misc. (6:30):** Craftsman 20-hp lawn trac.; Simplicity 14-hp lawn trac. w/bagger; Cub Cadet push mwr.; Mantis tiller; Parker lawn sweeper; Butcher Boy bandsaw; cherry r/c lumber; plus more not mentioned. **Terms:** Visa/MC/Disc. 3% admin. fee, waived for cash or PA check. 6% sales tax.

Auctioneers:

CLARENCE N. SHIRK
AUCTION SERVICE,
 AU-3757-L • 610-683-5093
RANDALL S. SHIRK, AA019413
 www.auctionzip.com ID#4430

**Auction For:
MULTIPLE
CONSIGNORS**

**WINDSOR NOW RENTING!
U-STORE**

From Hamburg 1-1/2 miles East on Old Rt. 22 - turn Left on Valley Rd. 1 block. (Windsor Industrial Park)

STORAGE AREAS - 5'x5' TO 10'x20'
STARTING AT \$25.00 MONTHLY

CALL 610.562.5162

RV MOBILE REPAIR: cold weather is coming, get your camper ready for winter. Winterize, final repairs all at your location. 610-823-5058.

SCREENED ENRICHED TOPSOIL: \$25/ yard plus delivery fee, large quantity discounts; Nice soil for gardens, flowerbeds and lawns, aged mushroom soil available. Call JOHN HEFFNER 610-550-9037.

Shirks' Lawn and Landscaping. Fall Clean ups, mulching, bed edging, prune shrubs, paver walkways, patios, retaining walls, planting shrubs and trees. Fully Insured, Free Estimates, call 610-944-8009 or 610-468-8751.

SMALL BACKHOE WORK trenching, footers, leveling, pools, driveways, land clearing and tree removal. No job too small. Very reasonable rates. Call Joe at 610-406-1443 leave message.

TIDY TINA'S cleaning services makes your life easier at an affordable rate. Once a month, bi-weekly or weekly. Call for a no obligation estimate for all your cleaning needs. 484-665-3384.

VISIT THE FRAMING LOFT at Leibensperger Card & Gift Shop. We can frame any size picture, diploma, certificate, license, stitchery, or poster. 71 South 4th St., Hamburg. Ph. 610-562-7823, toll free 1-800-875-1446.

EMAIL in your advertisement
 display@windsorpress.com

COUNTRYSIDE COAL Delivery Service

Anthracite Coal - Hard - Medium Hard
 All Sizes - Courteous Delivery Service
717-933-9263 717-269-0804

WE SELL
BLASCHAK COAL

Agway Fence Vinyl and Aluminum Fencing

- Maintenance Free • Lifetime Warranty
- Over 20 Different Styles

Also Available: Chain Link, Split Rail, Custom Wood Picket & Stockade

Free Estimates - Prompt Installation
 Residential and Commercial

**EARLY ORDER!**

Ironstone

Wood Pellets**\$269⁰⁰**

/ton



Stop By For
A Great Lunch

Sandy-Jo's Lunchbox**Food Wagon**

Now On Our

Parking Lot

20 lb.

Propane**Refill****\$11⁹⁹****Water Softener Salt Sale****Super Course**40 lb. **\$5.99****Pellets**40 lb. **\$6.99****Iron Fighter** 40 lb. **\$7.99****Buy 8 Bags, Get 1 Bag FREE****Cressona AGWAY**

Your Yard, Garden and Pet Place

Serving Customers For 65 Years
 2nd & Walnut Sts., Cressona, PA

570-385-2160

HOURS: Mon. - Fri. 8 to 6; Sat. 8 to 3; Sun. 10 to 2



10% Off
Aspen Song
Birdseed

**POLE BUILDINGS & CONCRETE FLOORS**

- Residential • Commercial
- Agriculture • Horse Barns
- Stock Buildings
- Custom Design



Built
Year 'Round

Also Available: Concrete Floors, Perma Columns, Insulation and a Variety of Maintenance Free Metal Roofing & Siding Colors with 45 Year Paint Warranty.

- FINANCING AVAILABLE -**JWL CONTRACTING, INC.****QUALITY ... START TO FINISH**

www.jwlpolebuildings.com

FREE ESTIMATES
1-800-861-6445

metal sales
 manufacturing corporation
TTS
 #NJ13V102786900
 #PA022680

HOME IMPROVEMENTS

B.G. SPOHN Construction & Home Improvements. Custom kitchens, Bathrooms, Corian & Formica counter tops, Ceramic tile, steel, Fiberglass & Wood doors, Replacement Windows, Decks, Vinyl siding, Capping, Gutters, Painting and Small Jobs. Honest Reliable, Insured Local Contractor Providing Quality Services 31 years. 610-926-1999, PA#103306.

BASTIAN CARPENTRY & Remodeling LLC. Windows, Doors, Decks, Porches, Siding, Aluminum Capping, Custom Interior Trim & Woodwork, Flooring, Cabinets, Basements Finished, New Construction & Restoration. 610-562-5326. Free Estimates. PA 047097

HOME IMPROVEMENTS

BOWERS CONSTRUCTION: Quality work, Reasonable Prices. Roofing, Siding, Remodeling, Windows, Decks, Additions, Garages. FROM FOUNDATION TO ROOF. Insured, 610-562-4692, PA#006953.

BUILD-A-BATH of PA Bathroom Renovations. Specializing in Acrylic Bath Systems. Certified in Walk In Tubs, Walk In Showers & Handicap Accessibility. Free Estimates Licensed/ Insured. HIC#-102776, 484-345-8833.

DECKS DECKS Construction Building decks, fences and rams since 1979. Free estimates and design. Call Mark 610-589-9902 PA#047954. www.decksdecksconstruction.com

B. Young
Asphalt Paving and Sealcoating

Free Estimates**484-486-0282**

PA #111185 • Driveways • Parking Lots • Hot Crack Repair • Gravel

HOUSEHOLD ITEMS/
FURNITURE

60" Samsung TV and TV stand, and surround sound, \$450; 610-650-2276 or 610-756-6236.

USED FURNITURE SALE: Sofas, Loveseats, Recliners, Chairs, Tables, Dressers, Cabinets, Beds, Retro, much more! Also Housewares, Glassware, Books, Toys, Clothing, Etc. BLUE MOUNTAIN THRIFT STORE, 1251 E. Main St., (Rt. 422) Annville, 717-867-1595.

FOR SALE: Antique Sear pot belly stove No 119-59. Also claw foot porcelain bathtub. Call 610-683-7381.

Thanks Berks County

You Voted - We Won

Best Seafood

Reading Eagle
Reader's Choice

Eric Senkovich
Best Chef*

Best Meat Store*

We Got Crabs!

DELICIOUS

SUPER DUPER

BERKS COUNTY'S FRESHEST SEAFOOD STORE
Always Making Sustainable Choices

Like Us On Facebook For Special Deals

Store 610.926.2025
Fax: 610.926.3696

Purchasing & Wholesale
610.926.2117

8472 Allentown Pike
Blandon, PA 19510

Hours: Mon.-Fri. 7 AM to 6 PM;
Sat. 7 AM to 5 PM; Sun. 10 AM to 3 PM
Accepting Access/Quest Card

FREE SOUP w/Purchase & Ad

Littleneck Clams

\$19⁹⁵ per 100

Wild USA Shrimp

Jumbo \$7⁵⁰ lb. In 5 lb. Box

Large \$4⁵⁰ lb. In 5 lb. Box

Lesser Quantities \$7⁹⁵ lb.

Lesser Quantities \$4⁹⁵ lb.

Crab Meat

Claw \$7⁹⁵ lb.

Jumbo Lump \$17⁹⁵ lb.

Special \$10⁹⁵ lb.

Lump \$12⁹⁵ lb.

YOUR CHOICE Halibut or Swordfish Steaks

\$6⁹⁵ lb.

Boneless Cod

\$4⁹⁵ lb.

Salmon Fillets

\$5⁹⁵ lb.

Black Diamond Steaks

\$9⁹⁵ lb.

Specials For Monday, October 26 thru Sunday, November 1

Fall Build Specials!

24x30x10 ... \$7,300

24x40x10 ... \$8,500

30x30x10 ... \$8,300

36x48x10 ... \$13,400

30x64x10 ... \$13,850

30x48x12 ... \$12,600

40x60x14 ... \$19,100

40x80x14 ... \$23,600

LIMITED TIME OFFER - CALL FOR DETAILS!!

Fall Prices Valid Thru Nov. 15, 2015

Prices Include Materials, Delivery, Tax and Labor

Within 75 Miles of Schuylkill Haven, PA 17972

Specials Include 1 Overhead Door & 1 Entry Door

Many Other Stock and Custom Sizes To Choose From

POST FRAME PRECISION POLE BUILDINGS

1-877-POLEBARN

1-877-765-3227

www.postframeprecision.com | www.pfpolebuildings.com

FREE Estimates

Serving PA, NJ & MD

GUN EXCHANGE

New - Used - Consignment Shop

Axis XP Rifle/Scope Package

starting at \$295⁰⁰ w/factory rebate

327 Mountain Rd., Lenhartsville, PA

6 Miles East of Cabela's off Exit 35 - on I-78

Office & Fax: 610-562-9630

Day Phone: 610-334-6330

Tues., Wed., Thurs., Fri. 1 to 6 p.m.

Sat. 10 a.m. to 1 p.m.; or by Appointment

FOR SALE: Broyhill Desk/Bookcase with Drawers, 30 inches wide, 17 inches deep, 76 inches high. Best offer. Call 610-926-5166.

FOR SALE: Coin Operated Washer and Dryer, working order. \$200 each, you haul. Phone 610-488-1795 leave message with phone number.

FOR SALE: \$125 Kenmore electric range, like new. Queen mahogany sleigh bed, like new \$150. Call 484-575-8642.

HOUSEHOLD ITEMS/
FURNITURE

FOR SALE: To A Good Home. Kimball Console Piano, Excellent condition, \$850. Call 610-562-2659.

GRQ Used furniture, 40K sq. ft. packed full of quality used furniture for every room in the house. Living Room, Bedroom, Dining room, Kitchen sets. Huge selection, Best Prices in Berks County. 145 Highland Ave., Kutztown. Open Thursday Friday, Saturday 10-6. Sunday 11-5. 484-646-9099

GARAGE/YARD SALES

The GREATEST yard sale ever! Multi family DOLLAR sale! Furniture... a bit higher in cost. In Lynnville across the street from the hotel 5524 Schochary Rd October 31st 8am to 3pm Rain date November 1st.

GARAGE/YARD SALES

Its Time for our indoor barn/garage sale. Over 10,000 items- all indoors -Fri/ Sat/ Sun Nov 6, 7, 8th -8am-3pm daily everything from tools, collectibles, furniture, household, holiday, pet, kids, books, jewelry, vintage, & sooo much more. The best part is all proceeds benefit Making it Pawssible a reduced cost neuter option. Food, baked goods & beverages will also be available. Don't miss the biggest & best sale this fall & it is inside! location Char-Will kennels, 2 East Railroad Ave New Ringgold fmi 570-573-3366.

YARD SALE: 9-2 Friday and Saturday 10/30 & 31, 626 Crisscross Road & Pleasant Hill Road, Fleetwood 19522. Too Much to List!

YARD SALE: October 30th & 31st. 8am-1pm. Something for Everyone. 19 Gensinger Road, Kutztown.

YARD SALE: Saturday 10/31, 8a-2p, 1890 State St Alburtis. Something for everyone. Clothing, toys, books, household goods, Longaberger baskets/ items and much more.

MOTORCYCLES/ATV'S

WANTED ALL MOTORCYCLES Before 1985. Running or not. Japanese, British, European. \$Cash\$ paid. Free appraisals! Call 315-569-8094 Email pictures or description to: cyclorestitution@aol.com (*186945).

ATV FOR SALE: 2012 Polaris Sportsman 800 EFL. Great condition. 262 miles. Garage kept. Asking \$5,200. Call 570-366-7787 after 4PM.

2003 HARLEY DAVIDSON Anniversary Edition Sportster XL883, only 11,000 miles, new PA inspection. Great bike. \$3,400. Ask for Ray 570-386-4473.

2004 Suzuki Savage 650, 10,800 miles, great shape \$1500. 570-391-2907. 1997 StarCraft pop-up camper, sleeps 8, nice shape \$1500.

Berco 54" snow blower with extension kit 60" width. Honda GX630 engine electric start. Jolly stick inside Cab height and spout adjustment. Set up for Kawasaki 610. Purchased 10/13 less than 20 hours use, garage stored, extra gas tank. Like new! Contact 610-334-6330. \$3300 or best offer.



THROWING THAT AWAY!

A classified ad is an affordable and simple way to attract potential buyers for your unwanted item(s).

Don't Wait

Call, Fax or E-mail us today and turn your unwanted stuff into CASH!

610-562-6595

FAX: 610-562-2770

E-mail: classifieds@windsorpress.com

www.windsorpress.com

RICK SPATZ

FREE ESTIMATES

FULLY INSURED

TREE TRIMMING AND REMOVAL

Serving Berks and Surrounding Counties For 28 Years

Stump Removal • Premium Firewood

FIREWOOD SALES & DELIVERY

CALL THE "TREEMAN"

610-763-9012

MOTORCYCLES/ATV'S

e-Subscribe to the Northern Berks & East Penn Valley Merchandiser at www.windsorpress.com

7th D&J CONSIGNMENT AUCTION

SAT., OCT. 31st, 2015 at 9:00 AM

Location: 740 Noble St. Kutztown. At Renningers Farm Markets in Kutztown

Tractors: AC 7040, JD 850 1525 Hrs., Kubota L1500. Gleaner F Combine W/Crnhd. Vehicles and Trlrs: 14Ft 05 Homestead 14K Dump Trlr, 98 Pequea 14K Gooseneck Tlrlr, 98 Chvy Suburban 154K, 95 Dodge Van 8 Pass 192K, Military Tlrlr, 5X12 Utility, 4X8 Tlrlr, Tandm Axle Farm Dump Tlrlr, Allison AT545 Auto Trans. Tillage: JD 310, 15Ft Bushhog W/ Foldup Wings, JD 12Ft, Athens 14Ft AC 12Ft Discs, IH 9Ft Offset Disc, Bushhog 12Ft Offset Disc, Leinbach and Other 6Ft 3Pt Discs, Chisel Plows 7, 8, 9T 3Pt, Brillion 10T 3Pt, Taylor Wgn & Brady 10T Pull Type. Cultimulchers: 12Ft IH 415, 10Ft, Nice 6Ft Cultimulcher (Rare), 3Ft Harrow, 3Ft Harrow W/ Roller On Back, 6Ft & 9 Ft Babcock Harrow, 14Ft Cultipacker, 1 and 2 Row 3Pt Cultvtrs. Plows: 1 Bt 1Pt McCormick. 1 Bt JD 3Pt. 2 Bt 3Pt JD & Ferguson, 3 Bt Pull Type JD, 5Bt Oliver. Planting Equip: JD 8250 & Van Brunt Grain Drills, Vicon 3Pt & Other 3Pt Fertilz Sprdrs, JD 7000 Crnplnr. Harvesting Equip: NI 310 1 R & 312 2Row NR Cornpicker, NH 28 Silo Blwr, JD 65 Blwr, NH 33 & JD Flail Chpprs. Hay Equip: Claas 350T 3Pt & Pequea 1140 11Ft Rotary Hay Rake, NH 256 and 258 Rakes, JD and NI Rollabar Rakes, Long 4 Wheel Rake, Tonutti 310 9Ft & Sitrex 7Ft 2 Star Tddrs, Pequea 710, NI 571 Hay Baler Small Squares, NH 271 Baler (Rough), NH 489 Hybne. Wagons: 8X18 and 8X21 Mtl Hay Wgns W/ New Flrs (Nice Wgns), Mtl Rack Wgn, Wdn Rack Wgn, 9X18 Flatbed Wgn W/ Wgn Bed. Gravity Wagons: Dakon 350 Bu, Huskee 225 and Kilbros, Gehl 806 Rnnng Gears and Others. Manure Sprdrs: Millcreek 15 Bu (New), Pequea 25G 25 Bu, Millcreek 75 PTO, Cub Ground Drive, NI Ground Drive 3 Beater (Nice), NI 3615 & 364, Gehl 1187 Tndm Axle, H&S 370, NI 217 PTO (New Wood Nice Shape), NH 145, NH 185, NH 195, NH 800, Gehl 315 Sprdrs. Misc Equip: NI 6IN Trnsprt Auger, 36Ft Little Giant Elvtr, Frtlzr Sprdr Buggy, 3Pt Potato Plow, 4Ft Brushhog, 5Ft JD & Woods Brushhogs, 6Ft Rhino Brushhog, JD Van Brunt Grain Drill, 3Pt York Rake (New), 4Ft 5Ft and 8Ft Wide Box Blades W/ Scarifier Teeth, 3Pt Bale Spears, Howse 6Ft 3Pt Tiller, 4Ft 5Ft 6Ft & 7Ft 3Pt Scraper Blades, Woods RB84 7Ft Scrp Blade, Silomatic Silo Unldr Parts For 16Ft and 20Ft Unldrs. Skid Steer Attach: Stout HD72-8 Brush Grapple, 72in Rock Grapple, 66in Brush Grapple, 66in Bucket Grapple, 66-72-74-78-96in New Quick Tach Bckts, 56 60 65 72 82 & 96 in Wide Used SS Bckts, New and Used SS Forks, Bale Spears New and Used, Steel 12in Tracks, 5Ft and 7Ft Pallet Fork Ext. Misc Farm Items: 2 12Ft PaulB and Other Cattle Head Gates, 8Ft Calf Head Gates, Westfield 15Ft 6in Auger, 135 & 150 Rissler TMR Mixrs, Patz Barn Cleaner, Tool Caps For Pickups, 3Pt Boom Lift, 3Pt Sawdust Groomer, 3Pt Befco and Other Post Hole Diggers, Howse and Other 3Pt Dirt Scoops. Lawn & Garden: JD 840A Zt Mower 60in 26Hp, Toro 42in Zero-Turn, Gravely Zt 1540 Zeroturn, Dixon 40in Zero Turn, JD Stx 38 Mwr W/Bggr, Kubota T1600 Diesel Mower, Simp Landlrd Dlx 54in Hydro W/Pwr Steering and Deck Lift, Simp Broadmoor Hydro, Simp Zt 14-38 Mower, JD 111 Trctr, 36in Mwr Deck For JD HD75 Walkbehind, Troy Bilt Horse Tiller & Tuffy Tiller, County Line Pull-Type Sprayer, JD and Craftsmen Dump Carts. Butcher Equip: Hobart Meat Grinder, and More. Shop Tools: 7Gal Air Comp. and Much More. Woodworking Tools: Powermatic 65 10in Tablesaw W/52in Beismeyer Fence, 24in Drum Sander, Rockwell 3/4 Spindle Shaper, Tablesaw, Bandsaw, Joiner, and Much More. Lumber & Other Bldg Items: 2 Margin Wood Stoves, Feed Mixer Tumbler Style 3 1/2 Ft By 7Ft Used For Soil Mixing, Acme Cast Iron Sink, 275 Oil Tank, Kodiak Wood Stove, 9X8 & 12X10 Garage Door, and Much More By Sale Day. Some Items Subject To Prior Sales.

Auction By: D&J CONSIGNMENT AUCTION

Auctrs: CLARENCE SHIRK AU3757L

& ERIC ZETTLEMOYER AU005210

Contact David Nolt @ 610-914-1248 or Jason Martin @ 610-223-8510

AZ LUBE AUTO SERVICE & REPAIR CENTER

Brakes • Shocks • Struts

Batteries • Tune-ups

5373 ALLENTOWN PIKE, TEMPLE

ACROSS FROM WALMART

610-929-8353

Fast Service

Hours: Mon. to Fri. 8-5

Sat. 7:30-3; Closed Sun.

Mobile Super High Mileage

\$39⁹⁹ + tax

Up to 5 quarts for high mileage cars

(Expires 11/8/15)

PA State Safety & Emission Inspection

\$36⁰⁰ + tax

Emiss = 21.00

Safety = 25.00

Reg. 46.00 For

Pass or Fail - Most Cars *Sticker fee extra.

Please present coupon at time of check-in.

Appt. recommended, but not required.

(Expires 11/8/15)

Mobil 1 Lube Express

For Inspection Appointment Recommended

Oil & Filter

\$22⁹⁸ + tax

Oil change includes up to 5 quarts of 5W30 only. Oil filter surcharges apply on some models. Please present coupon at time of check-in. (Expires 11/8/15)

Mobil Super 5000 Oil

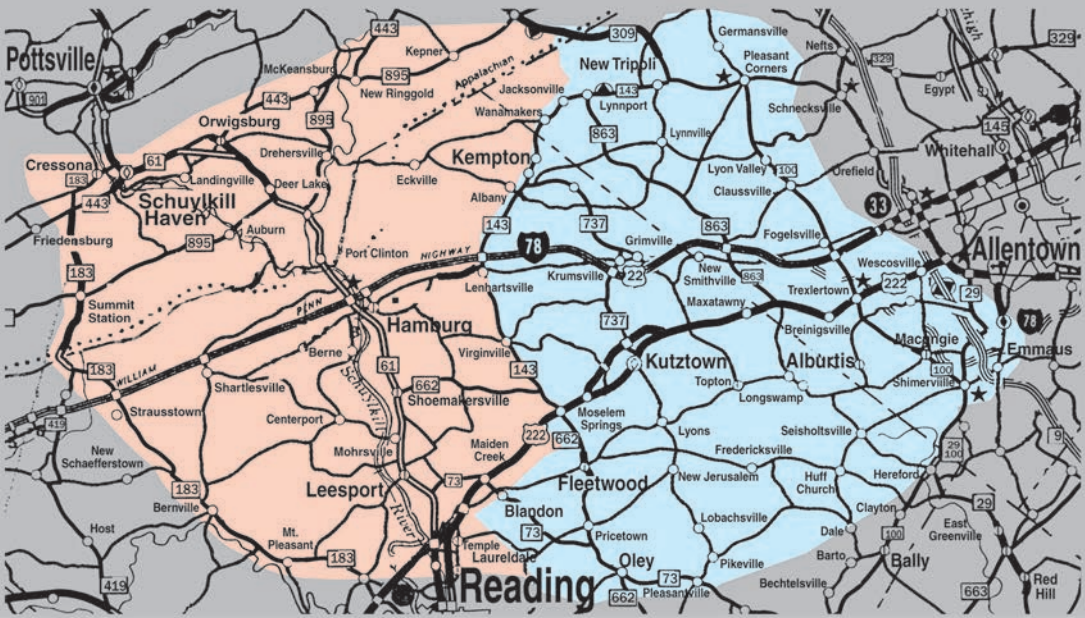
Change for Long Engine Life

\$28⁹⁹ + tax

Includes up to 5 quarts of Mobil Super 5000 Engine oil. Oil filter surcharges apply on some models. Includes tire pressure adjustment, washer fluid top-off, suspension greased when required & air filter checked. (Expires 11/8/15)

Ever wonder...

What is the East Penn Valley and Northern Berks Merchandisers' coverage area?



These publications are distributed in Northern Berks County and parts of Lehigh and Schuylkill Counties in Eastern Pennsylvania.

GRAND TOTAL WEEKLY DISTRIBUTION **71,537**

NORTHERN BERKS
Merchandise
31,056

EAST PENN VALLEY
Merchandise
40,481

Area	Zip Codes	Mail	Rural Carried	Intown Carried	Drop Boxes	Totals
Auburn	17922	1687		270		1957
New Ringgold	17960		1030	220		1250
Orwigsburg	17961		1515	860	40	2415
Schuylkill Haven	17972	200	2005	2560	25	4790
Summit Station	17979	110				110
Bernville	19506		815		295	1110
Centerport	19516			131		131
Hamburg	19526		1705	2360	320	4385
Kempton	19529				20	20
Leesport	19533		950	865	122	1937
Lenhartsville	19534		205		155	360
Mohrsville	19541		1185			1185
Port Clinton	19549			140	15	155
Shartlesville	19554			240	83	323
Shoemakersville	19555		875	825	170	1870
Strausstown	19559			190		190
Alsace Manor	19560		210			210
Temple	19560		1100	1665	145	2910
Reading RD #2	19601		710			710
Laureldale	19605			2934		2934
Riverview Park	19605			1848		1848
Miscellaneous		31			225	256
TOTAL DISTRIBUTION		2028	12,305	15,108	1615	31,056

Area	Zip Codes	Mail	Rural Carried	Intown Carried	Drop Boxes	Totals
Alburtis	18011		650	610	8	1268
Breinigsville	18031		1000		50	1050
Emmaus	18049	564	1816	3428	150	5958
Fogelsville	18051			175	90	265
Ancient Oaks	18062			930		930
Macungie	18062	4998	1300	595	100	6993
New Tripoli	18066		1385		125	1510
Trexlerstown	18087	524				524
Wescosville	18106	986	1153	411	50	2600
Blandon	19510			365		365
Bowers	19511			145		145
Fleetwood	19522		5660	1663	240	7563
Hamburg	19526		110		140	250
Kempton	19529		950		20	970
Kutztown	19530		1985	1990	660	4635
Lenhartsville	19534		425		185	610
Lyons Station	19536			225	50	275
Mertztown	19539		1230		330	1560
Oley	19547		850	355	250	1455
Alsace Manor	19560		170			170
Topton	19562			990	115	1105
Miscellaneous		32			248	280
TOTAL DISTRIBUTION		7104	18,684	11,882	2811	40,481

All Ads
Also
Appear
In Our
Online
Edition
FREE!



6 N. Third St.,
P.O. Box 465
Hamburg, PA 19526-0465
610-562-2267 or
1-800-562-5521
FAX: 610-562-2770
www.windsorpress.com

To view large map, drop box locations, advertising rates and more, go to www.windsorpress.com.

Congratulations

...to the 2015 Halloween Coloring Contest Winners!

Thanks For All The Wonderful Entries This Year!

WINNERS~2015 (Ages 3 to 4)



1st Place: **Kayla Ulmer**
NEW RINGGOLD, PA



2nd Place: **Emma Klinger**
MOHRSVILLE, PA



3rd Place: **Joscelyn Arena**
HAMBURG, PA

Honorable Mention:
Serenity Gilbert - LAURELDALE, PA
Kylie Werley - HAMBURG, PA
Carson Reber - AUBURN, PA

WINNERS~2015 (Ages 5 to 6)



1st Place: **Logan Zellner**
HAMBURG, PA



2nd Place: **Luis Ortiz**
HAMBURG, PA



3rd Place: **Thea Sten**
SCHUYLKILL HAVEN, PA

Honorable Mention:
Hailee Isamoyer - READING, PA
Charlotte Fiscus - HAMBURG, PA

WINNERS~2015 (Ages 7 to 8)



1st Place: **Ava Venettone**
HAMBURG, PA



2nd Place: **Morgan Riegel**
HAMBURG, PA



3rd Place: **Abigayle Witinski**
LEESPORT, PA

Honorable Mention:
Chase Senft - HAMBURG, PA
Delilah Cole - LEESPORT, PA

A TREMENDOUS THANK YOU TO ALL OF OUR WONDERFUL SPONSORS WHO DONATED PRIZES:

ADAMS & BRIGHT DRUGS, LLC
306 State St., Hamburg • 610.562.2738
Mon. thru Fri. 9-6; Sat. 9-3

ALYSSA SCHIMPF, YOGA INSTRUCTOR
Inner Peace & Wellness Center, 202 S. Third St., Hamburg, PA
570.573.4914 - Call For Appointment

AMATO'S PIZZA & PASTA
2210 Main St., Centerport • 610.916.7594
Tues.-Sat. 11 am to 9 pm; Sun. Noon to 9 pm; Closed Mon.

CANDY'S HOMEMADE ICE CREAM & ITALIAN ICE
Rt. 61, Shoemakersville, PA • 610.562.1620
Fall Hours: 11 am to 9 pm 7 days a week

EVELYN & HARRIETTE'S
1232 Oysterdale Rd., Oley, PA • 610.987.6055
Tues. - Sat. 10 am to 5 pm

THE DORIS BERRY SHOP
20 S. Fourth St., Hamburg • 610.562.2051
Mon., Tues., Wed. 9-5, Thurs. & Fri. 9-8, Sat. 9-4

INNER PEACE & WELLNESS CENTER
202 S. Third St., Hamburg • 610.401.1342
Mon.-Thurs. 10-1 & 4-7, Sat. 10-1
www.innerpeaceandwellnesscenter.com

KUZAN'S HARDWARE & RENTAL CENTER
1069 Pottsville Pike, Rt. 61, Shoemakersville
610.562.7186 • www.kuzanshardware.com
Mon. - Fri. 7:30-7, Sat. 7:30-5

PENNY HILL FARM
4319 Belleman's Church Rd., Mohrsville • 610.926.3298
Hours: 9 am to 7 pm Daily

PINNACLE HYPNOSIS & THERAPIES
202 S. Third St., Hamburg • 610.823.4160
Hours by appointment • www.pinnaclehypnosis.com

ROCK SCHOOL
Rt. 61, Shoemakersville • 610.562.4488
Hours by appointment • www.rockschool-music.com

THE WINDSOR PRESS, INC.
6 N. Third St., Hamburg • 610.562.2267
Mon. - Fri. 8-5 • www.windsorpress.com

TREASURES THROUGH GENERATIONS
1064 Memorial Hwy, Oley, PA 19547 • 484.336.8079
Tues. through Sat. 10 am - 8 pm; Sun. 11 am - 5 pm

ALL CHILDREN SHOULD PICK UP THEIR PRIZES IN PERSON
AT THE OFFICE OF THE WINDSOR PRESS, INC.
6 N THIRD ST., HAMBURG, PA 19526-0465
THURSDAY OR FRIDAY, OCTOBER 29 OR 30
8 A.M. TO 5 P.M.

PRE-OWNED VEHICLES COST LESS AT RINALDI AUTO GROUP

INVENTORY REDUCTION

NOW THRU MONDAY!

See these Vehicles in SCHUYLKILL HAVEN

'06 PONTIAC VIBE

54004A

\$3,990

'06 CHEV. COLORADO LS

12171A

\$5,990

'11 FORD FIESTA S - 61K Miles

31180A

\$7,890

'08 CHEV. IMPALA LT

#41130B

\$8,195

'08 FORD FOCUS - Only 34K Miles

52300N

\$8,995

'07 CHEV. IMPALA LT - 50K Miles

79359482

\$9,490

'08 CHEV. IMPALA LS

42055D

\$9,995

'03 CHEV. SILVERADO 1500 - 28K Miles

51280A

\$9,995

'09 CHEV. IMPALA LT - 3.5L

91210820

\$10,790

'10 CHEV. COBALT LT

5727

\$10,995

'09 CHEV. MALIBU

94133593

\$11,290

'09 CHEV. MALIBU LS

94131395

\$11,590

'07 CHRYSLER 300C - HEMI!

52092A

\$11,890

'08 SUBURU FORESTER 2.5 LL BEAN - AWD

52251A

\$11,990

'08 SUBURU FORESTER SPORTS 2.5 - AWD

51103Y

\$11,990

'13 HYUNDAI ELANTRA

52161A

\$12,150

'08 INFINITI G35 4WD PREMIUM

44020C

\$12,690

'08 CHEV. COLORADO CREW CAB 4X4

Just In!

\$12,990

'12 CHEV. SONIC LTZ HATCHBACK CERTIFIED - 25K Miles

51040A

\$13,785

'10 CHEV. MALIBU LS - 30K Miles

AF117909

\$13,898

'13 DODGE AVENGER SXT - 24K Miles

54002A

\$13,990

'10 CHEV. MALIBU LS - 28K Miles

A4107082

\$13,990

'10 CHEV. MALIBU LS - 28K Miles

A4106482

\$13,990

'13 DODGE DART SXT RALLYE

54027B

\$13,995

'11 JEEP PATRIOT 4X4 - 57K Miles

51102A

\$13,995

'10 JEEP PATRIOT 4X4 - 25K Miles

Just In!

\$13,995

'09 CHEV. HHR LT - 41K Miles

43521

\$13,995

'11 CHEV. MALIBU LT -31K Miles - GM CERTIFIED

\$14,290

'11 CHEV. MALIBU LS - 16K Miles - GM CERTIFIED

\$14,490

'11 CHEV. MALIBU LT - 28K Miles - GM CERTIFIED

\$14,490

'11 CHEV. MALIBU LS - 15K Miles - GM CERTIFIED

\$14,490

'11 VOLKSWAGEN JETTA 2.5L SEL - 33K Miles

VR353649

\$14,990

'11 JEEP COMPASS 4X4

52223A

\$14,990

'09 FORD EDGE LIMITED

52236Z

\$15,375

'11 CHEV. MALIBU LT -13K Miles - GM CERTIFIED

BF187671

\$15,490

'11 CHEV. MALIBU LT - 19K Miles - GM CERTIFIED

BF199538

\$15,490

'09 PONTIAC SOLSTICE STREET EDITION - 19K Miles

44069B

\$16,995

'05 DODGE RAM 1500 LARAMIE SLT

52287A

\$16,995

'09 JEEP GRAND CHEROKEE LIMITED

2491Q

\$17,995

'07 CHEV. AVALANCHE LT

52300A

\$17,995

'13 HYUNDAI SONATA LIMITED 2.0T

44048A

\$18,000

'12 CHEV. COLORADO CREW CAB - 44K Miles

52181A

\$18,250

'09 CHEV. TRAVERSE LT AWD - 37K Miles

52205A

\$18,990

'07 CADILLAC ESCALADE

JUST IN!

\$19,990

'13 HYUNDAI GENESIS COUPE 3.8 R-SPEC - 24K Miles

52266A

\$20,990

'07 CADILLAC ESCALADE

54022B

\$21,250

'12 DODGE DURANGO SXT AWD

CC213188

\$21,990

'13 CHEV. EQUINOX LT AWD - 22K Miles - GM CERTIFIED

52127A

\$21,995

'11 GMC SIERRA 1500 SLE 4X4 CREW CAB

52232A

\$23,000

'15 TOYOTA RAV4 XLE AWD - 1500 Miles

52256A

\$24,250

'11 CHEV. CAMARO SS - Hurst Edition - 35K Miles - GM CERTIFIED

52287M

\$24,995

'08 TOYOTA TUNDRA SR5 DOUBLE CAB 4X4 TRD - 48K Miles

52271A

\$24,995

'10 CHEV. SILVERADO 1500 LT EXT. CAB 4X4 - 46K Miles

AZ201831

\$25,490

'11 JEEP GRAND CHEROKEE LARADO 4X4

BC538165

\$25,790

'11 CHEV. SILVERADO 1500 EXT. CAB 4X4 Z71 - 36K Miles

BZ225825

\$25,990

'14 JEEP WRANGLER UNLIMITED SAHARA 4X4 - 4K Miles

L240585

\$33,890

'11 CHEV. TAHOE LTZ

T6004A

\$35,995

'13 FORD F-150 FX-4 SUPERCREW 4X4 - 19K Miles

52226A

\$36,990

'14 CADILLAC SRX LUXURY AWD - 5K Miles GM CERTIFIED

52210M

\$37,990

'15 CHEV. SUBURBAN LT 4X4 - GM CERTIFIED

2495P

\$52,990

'12 GMC ACADIA DENALI AWD

JUST IN!

CALL

Home of the Credit KING

CREDIT PROBLEMS? WE CAN HELP!

1-888-385-2881

CALL TODAY! Ask for Mr. Russell

See these Vehicles in SHENANDOAH

OVER 15 IMPALAS!

OVER 12 MALIBUS!

OVER 10 COBALTs!

5 CRUZES!

5 CAVALIERS!

'02 CHEV. CAVALIER - Green

7F043A

\$2,995

'97 ACURA CL

7D027B

\$3,495

'03 HYUNDAI ACCENT 4 DOOR

15062M

\$3,895

'03 CHEV. CAVALIER LS SEDAN - 95K

7E084B

\$3,995

'04 PONTIAC VIBE HATCHBACK - 40K Miles

7C058A

\$3,995

'03 CHEV. CAVALIER - Blue

7E084B

\$4,495

'01 CHRYSLER SEBRING CONVERTIBLE - 80K Miles!

10195A

\$4,995

'05 CHEV. COBALT SEDAN

2513B

\$4,995

'01 SUBURU OUTBACK WAGON - 80K Miles

7C133C

\$4,995

'04 CHEV. CAVALIER LS - Sport Coupe

7F047C

\$4,995

'03 FORD TAURUS SE WAGON

150165

\$4,995

'03 CHEV CAVALIER COUPE Z24 - 72K

7B104A

\$5,495

'07 CHEV COBALT LS SEDAN

14075A

\$5,995

'05 CHEV. TRAILBLAZER 4x4

14154A

\$5,995

'97 CADILLAC DEVILLE - 60K Miles

16246B

\$5,995

'06 CHEV. COBALT LS SEDAN

2369B

\$5,995

'07 CHEV. COBALT - Black

7E121C

\$5,995

'05 HYUNDAI TUSCON GL

10176C

\$5,995

'08 TOYOTA SCION

15100B

\$6,495

'08 CHEV MALIBU LS SEDAN

14145A

\$6,995

'03 JEEP LIBERTY SPORT 4X4 - 80K Miles

7D056B

\$6,995

'07 CHRYS. 300-SERIES TOURING SEDAN AWD!

7D025B

\$6,995

'09 CHEV. COBALT - Dark Blue

212159

\$6,995

'06 CHEV. COBALT LT

15130A

\$6,995

'08 CHEV. AVEO LS SEDAN - SILVER

063273

\$6,995

'03 CHEV. TRAILBLAZER LTZ -80K Miles

7E125C

\$6,995

'04 CHEV. TRACKER

15062B

\$6,995

'06 PONTIAC TORRENT AWD

15069A

\$6,995

'05 CHEV. TRAILBLAZER - 92K Miles

2542C

\$6,995

'04 DODGE DURANGO - * Passenger

7E119A

\$6,995

'07 VOLKSWAGEN JETTA Turbo!

14038A

\$7,995

'08 CHEV. MALIBU LS SEDAN - 40K Miles

13690A

\$7,995

'07 CHEV. COBALT - 55K Miles, White

14128A

\$7,995

'08 CHEV. COBALT - Grey

7E159B

\$7,995

'07 CHRYSLER PT CRUISER TOURING

VA632640

\$7,995

'04 FORD ESCAPE XLS 4x4

1749B

\$7,995

'09 CHEV AVEO LT SEDAN

14040A

\$7,995

'06 MERC. MARINER SUV 4X4 - 80K Miles!

15082A

\$7,995

'09 CHEV. AVEO - Sport Red, 22K Miles

15084A

\$8,495

'11 FORD FUSION SE SEDAN

7F126A

\$8,995

'08 CHEV. MALIBU LS SEDAN

2516A

\$8,995

'10 CHEV. COBALT - Black

2556B

\$8,995

'05 FORD ESCAPE XLT 4X4 - 80K Miles! Roof!

7F086A

\$8,995

'06 JEEP LIBERTY SPORT 4X4

1742A

\$8,995

'99 GMC SIERRA 1500 SLE 4X4 - Super Clean

7E160A

\$8,995

'07 NISSAN ALTIMA - 73K Miles

7E109

\$8,995

'07 JEEP COMMANDER SPORT 4X4

2531D

\$8,995

'08 CHEVROLET UPLANDER - 72K Miles

14052B

\$8,995

'07 CHEV. IMPALA LS SEDAN - 34K Miles

132427

\$9,495

'07 HONDA ACCORD SE - 70K

F153A

\$9,995

'02 CHEV. AVALANCHE Z71 - Leather

15028M

\$9,995

'12 CHEV. SONIC - Silver

7F092A

\$9,995

'08 TOYOTA PRIUS

2553B

\$9,995

'09 DODGE CALIBER SXT - 39K Miles

1775

\$9,995

'09 DODGE CALIBER SXT - 41K Miles

1776

\$9,995

'10 DODGE CHARGER - 92K Miles

7E049B

\$9,995

'08 CHEV. IMPALA LT SEDAN

357867

\$10,995

'12 KIA RIO LX 5-DOOR HATCHBACK - 28K Miles

13192A

\$10,995

'10 CHEV. COBALT - Red, 29K Miles - GM CERTIFIED

229719

\$10,995

'12 CHEV. SONIC 1LT HATCHBACK - 29K

7B055B

\$10,995

'08 CHEV. IMPALA LT SEDAN

117392

\$10,995

'10 TOYOTA COROLLAS - 7 IN STOCK!

Starting at \$10,995 up to \$12,995

'11 DODGE CALIBER MAINSTREET- Roof! Alloys! - 60K

7F056A

\$10,995

'08 LINCOLN MKZ - Loaded - 55K MILES

7F107A

\$10,995

'11 DODGE CALIBER _ Black

15091A

\$11,995

'11 DODGE CALIBER MAINSTREET- Roof! Alloys! - 31K

7B041A

\$11,995

'11 CHEV. CRUZE - Light Blue, 49K

15103A

\$11,995

'03 DODGE RAM 1500 QUAD CAB 4X4 - 5.7L HEMI!

11281B

\$11,995

OVER 15 CHEVROLET SILVERADO'S IN STOCK! 4X4S! REG. CABS! EXT. CABS! CREW CABS!

'06 FORD RANGER EXT'D. CAB XLT - 90K

7F112A

\$11,995

'10 TOYOTA COROLLA LE SEDAN - 20K Miles!

1734A

\$12,495

'10 TOYOTA COROLLA LE SEDAN - 20K Miles!

283933

\$12,495

'10 TOYOTA COROLLA LE SEDAN - 20K Miles!

7F122A

\$12,495

'11 CHEV. CRUZE - Silver, 46K

15140A

\$12,495

'11 CHEV. CRUZE - Blue Granite, 54K

15104A

\$12,495

'13 DODGE AVENGER - Chrome Wheel

4150A

\$12,495

'11 MITSUBISHI LANCER GTS

1742C

\$12,495

'11 CHRYSLER 200 V6 - TOURING

15028B

\$12,495

'11 CHEV. IMPALA SEDAN - 39K Miles GM CERTIFIED

14086A

\$12,995

'11 DODGE CALIBER HEAT- Roof! Alloys!

7E083C

\$12,995

'13 CHEVROLET SONIC - Red

15129A

\$12,995

'12 HYUNDAI ELANTRA GLS SEDAN - 46K Miles!

7F089A

\$12,495

'13 KIA RIO - 34K Miles

7F077A

\$12,995

'04 JEEP WRANGLER X HARDTOP - V6!

7A119A

\$12,995

'11 CHEV. IMPALA SEDAN - 39K Miles GM CERTIFIED

14086A

\$12,995

'12 FORD FOCUS - 40K Miles!

7F096B

\$13,495

'08 ACURA RDX - loaded

15122A

\$13,495

'07 JEEP LIBERTY LIMITED Leather, Roof, 40K Miles

F142B

\$13,495

'11 DODGE CALIBER HB MAINSTREET - 30K Miles!

7D047A

\$13,995

'13 CHEV. CRUZE LS - 14K Miles GM CERTIFIED

1810A

\$13,995

'10 DODGE GRAND CARAVAN HERO

15054A

\$13,995

'11 CHEV. CRUZE LTZ - Black, 25K GM CERTIFIED

15103A

\$13,995

'09 FORD MUSTANG COUPE - 30K Miles!

14057A

\$13,995

'13 KIA RIO LX 5-DOOR HATCHBACK - Roof! - 11K

7E139A

\$13,995

'13 KIA OPTIMA - 21K Miles

7F034A

\$13,995

'12 CHEV. MALIBU 1LT GM CERTIFIED

14081A

\$13,995

'12 CHRYS. 200 TOURING SEDAN - Under 30K Miles

7E126A

\$14,995

'13 DODGE DART SXT "Header Orange" - 16K Miles

7F140A

\$14,995

'10 JEEP PATRIOT SPORT - 17" Rims, 19k miles

7G014A

\$14,995

'13 CHEVROLET CRUZE LT - 22K Miles

7F103A

\$14,995

'12 CHEV. MALIBU LT SEDAN - 8K Miles! GM CERTIFIED

12031

\$14,995

'13 DODGE DART SXT SEDAN - 5K Miles! Remote Start!

7E003A

\$14,995

'13 DODGE DART LIMITED- 30K Miles! 8.4 Touch Screen! Roof!

7F094A

\$14,995

'10 TOYOTA RAV 4 4X4

13191B

\$14,995

'12 CHEV. MALIBU LTZ - 36K Miles

15096A

\$15,495

'06 NISSAN FRONTIER CREW CAB 4X4

1730A

\$15,995

'12 FORD FUSION SEL SEDAN - Leather! Roof!

7F026A

\$15,995

'12 JEEP COMPASS SPORT FWD Under 2K Miles!

7C077

\$16,495

'08 CHEVROLET COLORADO CREW CAB LT

7F036B

\$16,995

'11 CHEV. EQUINOX LT AWD

15066A

\$17,495

'12 DODGE JOURNEY SXT AWD

14016B

\$17,995

'11 JEEP COMPASS 4X4 - 30K Miles!

14028A

\$17,995

'11 JEEP LIBERTY RENEGADE 4X4

14045C

\$17,995

'10 CHEV. TRAVERSE LT AWD GM CERTIFIED

13104B

\$17,995

'11 FORD ESCAPE XLT 4X4 - 36K Miles!

7E158A

\$17,995

'11 SUBARU FORESTER PREMIUM AWD!

15088A

\$17,995

'12 HYUNDAI TUSCON LIM. 4X4 - Leather, Roof, Nav

7F130A

\$18,995

'12 CHEV. EQUINOX

15088A

\$19,495

'15 CHRYSLER 200 Limited - 500 Miles!

F085

\$19,995

'09 RAM CREW CAB BIG HORN - 20" RIMS, Loaded!

15089A

\$19,995

'12 DODGE DURAQNGO -66K Miles

7F133A

\$19,995

'12 CHEV. EQUINOX LTZ- Sunroof! GM CERTIFIED

7F113A

\$20,995

'12 JEEP WRANGLER Soft Top, 32" Tire package

5013B

\$21,995

'10 JEEP WRANGLER SAHARA - Soft Top, Stick, 38K Miles

5125A

\$22,995

'13 CHEV. EQUINOX 17K Miles , Blue

15142A

\$22,995

'13 GMC TERRAIN SLT AWD - V6! Leather! GM CERTIFIED

2550B

\$23,495

'13 HONDA ACCORD - TOURING, Loaded, V6, 17K Miles

7F037A

\$24,995

'15 CHEV. SILVERADO 1500 EXT'D CAB LT 4X4

157075B

\$25,995

'11 CHEV. SILVERADO 1500 LT EXT. CAB 4X4 GM CERTIFIED

15077A

\$25,595

'10 CHEV. SILVERADO 1500 LT EXT. CAB 4X4 GM CERTIFIED

14064A

\$27,495

'11 CHEV. SILVERADO 1500 EXT'D CAB 4X4 GM CERTIFIED

14084A

\$27,995

'11 CHEV. SILVERADO 1500 CREW CAB LT 4X4 GM CERTIFIED

14112A

\$28,995

'12 JEEP GRAND CHEROKEE LAREDO 4X4 V8, Leather, Nav!

7F137A

\$28,995

'13 JEEP GRAND CHEROKEE - 22K Miles! Roof!

7F124A

\$28,995

'13 GMC ACADIA - Bucket Seats! Sunroof! DVD! GM CERTIFIED

2551B

\$28,995

'12 CHEV. SILVERADO LT CREW CAB 4X4 GM CERTIFIED

15027A

\$29,995

'12 DODGE RAM 1500 4X4 CREW CAB - 24K Miles! 20" Rims!

14119A

\$29,995

'14 JEEP CHEROKEE TRAIL HAWK - 11K Miles! V6! Leather!

7F123A

\$29,995

'15 JEEP CHEROKEE LIMITED 4X4 - 5K Miles! Roof! Nav!

7F080A

\$30,995

'12 DODGE RAM 1500 LARAMIE - Loaded

7F156A

\$30,995

'14 JEEP GRAND CHEROKEE LIM. DIESEL

7F155A

\$31,995

'13 JEEP WRANGLER UNLIMITED SAHARA Nav, Hard Top

15135A

\$31,995

'13 CHEV. SILVERADO 3500HD CREW CAB 4X4 Diesel! Dually!

15068A

\$41,995

'15 CHEV. SUBURBAN LT - 20K Miles

JUST TRADED

AT RINALDI DEALERSHIPS, IT'S ALL ABOUT YOU!

R&R AUTO GROUP

Chevrolet

Cadillac

GPS Address: 388 PA61 N. Schuylkill Haven Located 9 Miles North of Cabela's

Vito Rinaldi

Chevrolet

Chrysler

Jeep

Dodge

Ram

Route 61, Just South of SCHUYLKILL HAVEN

570-385-2881

Rinaldi

Chevrolet

Chrysler

Jeep

Dodge

Ram

Route 924, Just South of SHENANDOAH

CHEVROLET: 570-462-1913

CHRYSLER/JEEP: 570-462-2713

Page 20

e-Subscribe to the Northern Berks and East Penn Valley Merchandisers at: www.windsorpress.com